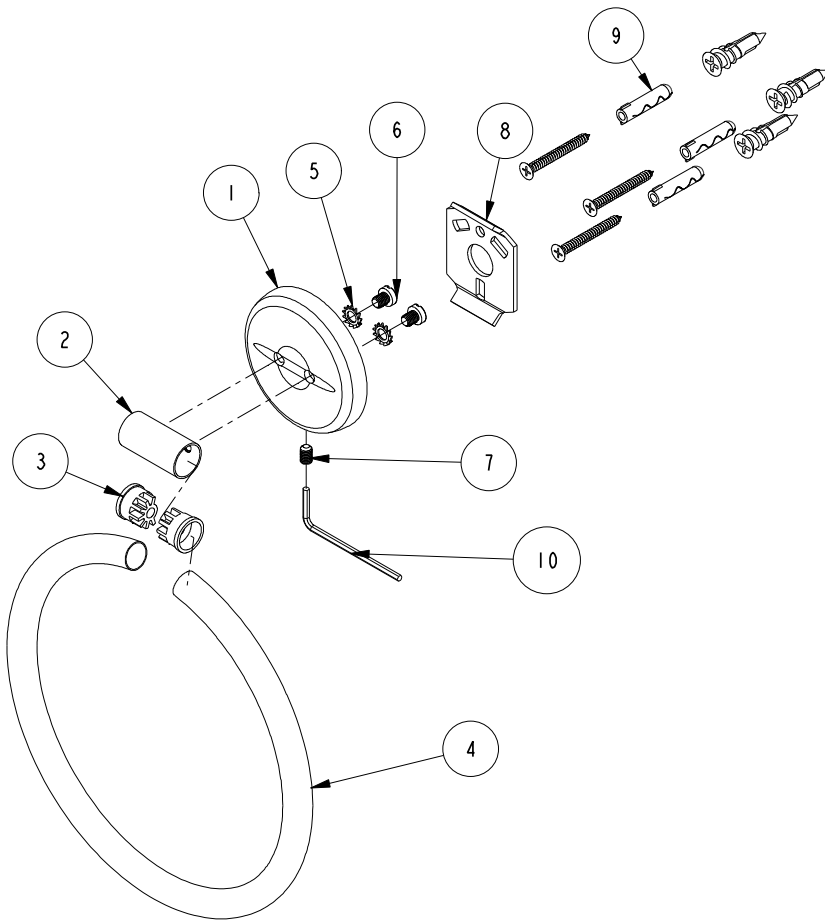


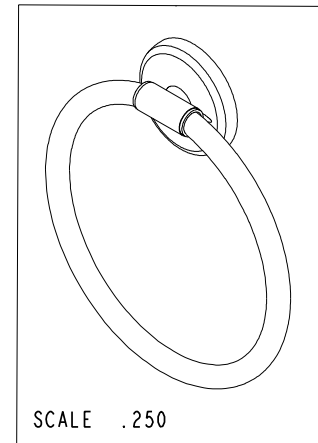
NOTES:

1. TO INSPECT ASSEMBLY, FOLLOW FIRST ARTICLE AND IN PROCESS INSPECTION SHEET.



BILL OF MATERIAL (CURRENT LEVEL)

ITEM	PT/ASSY	DESCRIPTION	TYPE	QTY.
1	80845	TOWEL RING ESCUTCHEON	PART	1
2	80846	TOWEL RING SLEEVE	PART	1
3	80848	TOWEL RING INSERT	PART	2
4	80847	6" TOWEL RING	PART	1
5	92949	WSHR, 5.3 ID X 10 OD X 0.6MM THK, EXT. TOOTH LOCK, SS	PART	2
6	92411	SCRW, M5 X .8 X 6 CHEESE HD SLT SS	PART	2
7	92438	SCRW, M5 X 8 SKT HD CUP POINT W/ SELF LOC SS	PART	1
8	03XX	MOUNTING BRACKET	PART	1
9	1-229	HOTEL SHELF HARDWARE PACK	ASSEMBLY	1
10	10888	HEX KEY, 2.5MM ALLOY STEEL	PART	1



SCALE .250

		-	-
TESTING	-	-	-
ASSEMBLY	-	-	-
PLATING	-	-	-
POLISHING	-	NEXT ASSY	USED ON
MACHINING	-	APPLICATION	
TOOLING FIXTURE #		REMOVE ALL BURRS AND SHARP EDGES	

UNITS ARE: INCHES [MM]

TOLERANCES ARE:

FRACTIONS DECIMALS ANGLES
±1/16" .X ±.1 [2.5] ±1°
.XX ±.06 [1.5](X.XXX) DENOTES CRITICAL DIMS.
ALL THREADS ARE CRITICAL

DRAWN

CHECKED

APPROVED

BRASSTECH
INCORPORATED2001 CARNEGIE AVE.
SANTA ANA, CA 92705
(949) 417-5207

TOWEL RING

DWG NO.
0305REV
B

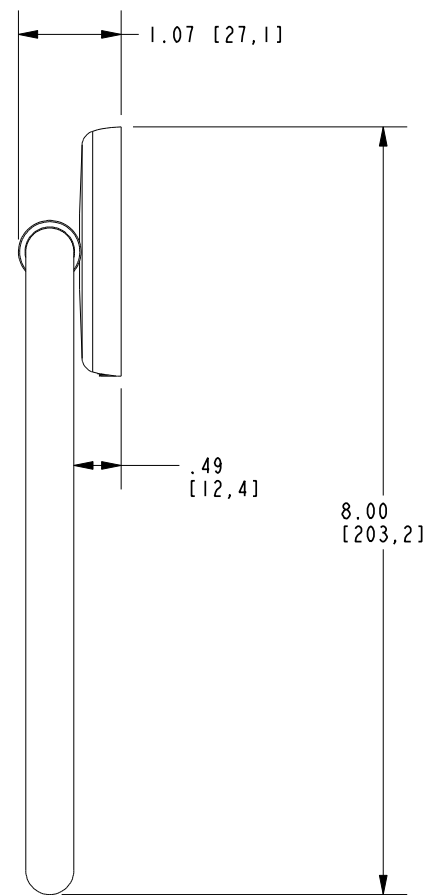
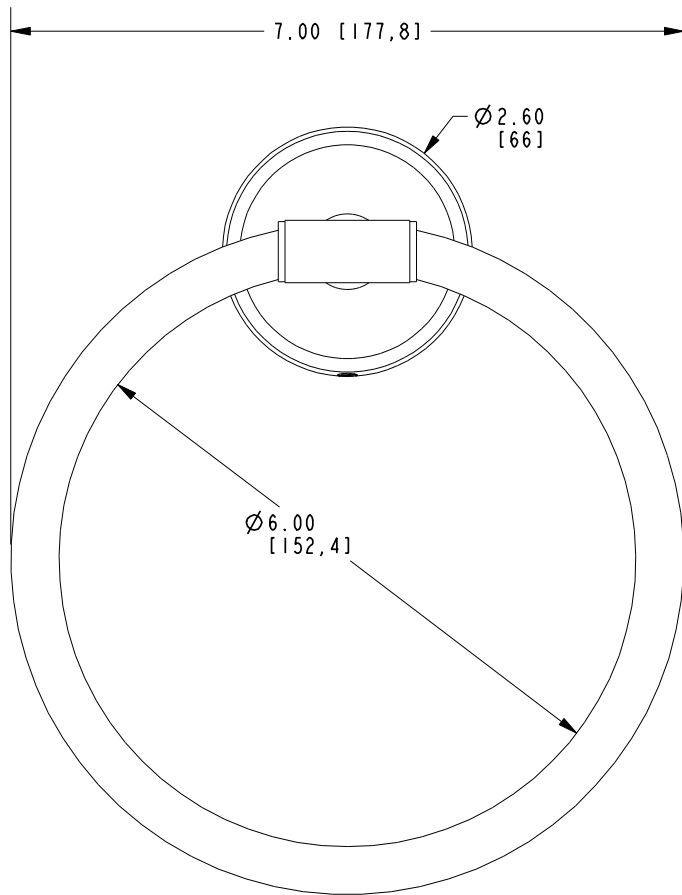
SCALE .312

REF. -

SHEET 1 OF 2

COPYRIGHT 2005 BRASSTECH, INC.
THESE DRAWINGS AND THE DESIGNS
DEPICTED HEREIN ARE THE PROPRIETARY
PROPERTY OF BRASSTECH. ANY USE
OR REPRODUCTION IS SUBJECT TO
THE EXPRESS APPROVAL OF BRASSTECH.
UNAUTHORIZED USE IS STRICTLY
PROHIBITED. ALL RIGHTS RESERVED.

-	B	EN-4419	03/07/22	R.S.
-	A	EN-3325	06/01/17	R.S.
-	-	RELEASED	01/21/02	-
ZONE	REV	DESCRIPTION	DATE	APPROVED



BRASSTECH		2001 E. CARNEGIE AVE. SANTA ANA, CA 92705 (949) 417-5207	
DWG NO. 0305		REV B	
SCALE .500	REF. -	SHEET 2 OF 2	