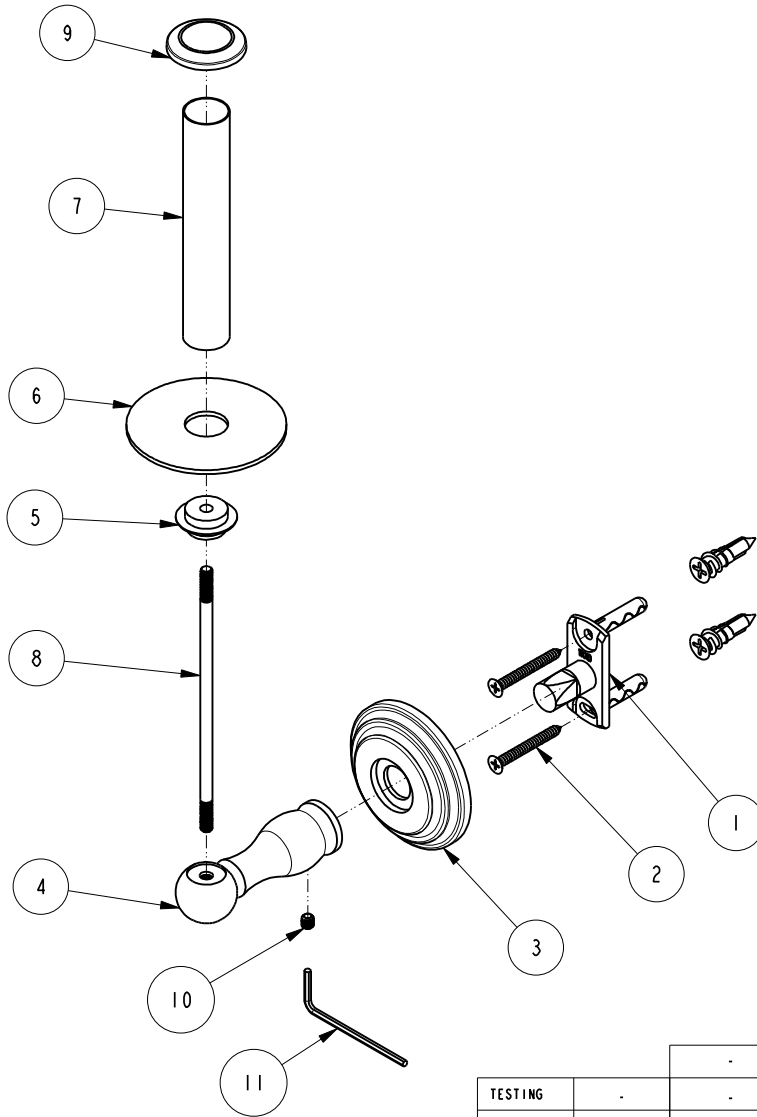


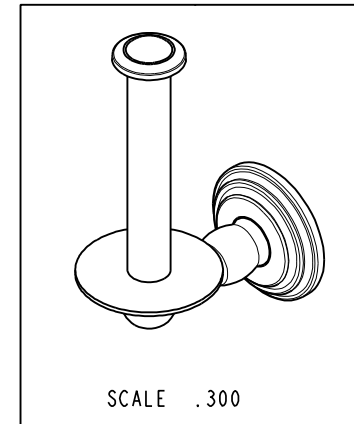
NOTES:

1. TO INSPECT ASSEMBLY, FOLLOW FIRST ARTICLE AND IN PROCESS INSPECTION SHEET.



BILL OF MATERIAL (CURRENT LEVEL)

ITEM	PT/ASSY	DESCRIPTION	TYPE	QTY.
1	11XXD	SOLID MOUNTING BRACKET	PART	1
2	1-206	HARDWARE PACK	ASSEMBLY	1
3	1100C	TOWEL SHELF ROSETTE	PART	1
4	40875	OPEN TISSUE HOLDER POST	PART	1
5	40879	OPEN TISSUE PEDESTAL	PART	1
6	40878	OPEN TISSUE PLATE	PART	1
7	40880	OPEN TISSUE BAR	PART	1
8	92936	OPEN TISSUE ROD	PART	1
9	40882	OPEN TISSUE FINIAL	PART	1
10	92308	SCRW, M5 X 5 SKT HD CUP PT W/ SELF LOC SS	PART	1
11	10888	HEX KEY, 2.5MM ALLOY STEEL	PART	1



UNITS ARE: INCHES [MM]	
TOLERANCES ARE:	
FRACTIONS DECIMALS	ANGLES
±1/16"	±1°
.X ±.1 [2.5]	
.XX ±.06 [1.5]	
(X.XXX) DENOTES CRITICAL DIMS.	
ALL THREADS ARE CRITICAL	
DRAWN	JINSON
CHECKED	R.S.
APPROVED	R.S.

**BRASSTECH** 2001 CARNEGIE AVE.  
INCORPORATED SANTA ANA, CA 92705  
(949) 417-5207

OPEN TOILET TISSUE HOLDER

DWG NO.	REV
1107	A
SCALE .325	REF. -
SHEET 1	OF 2

COPYRIGHT 2005 BRASSTECH, INC.  
THESE DRAWINGS AND THE DESIGNS  
DEPICTED HEREIN ARE THE PROPRIETARY  
PROPERTY OF BRASSTECH. ANY USE  
OR REPRODUCTION IS SUBJECT TO  
THE EXPRESS APPROVAL OF BRASSTECH.  
UNAUTHORIZED USE IS STRICTLY  
PROHIBITED. ALL RIGHTS RESERVED.

		-	-
TESTING	-	-	-
ASSEMBLY	-	-	-
PLATING	-	-	-
POLISHING	-	NEXT ASSY	USED ON
MACHINING	-	APPLICATION	
TOOLING FIXTURE #		REMOVE ALL BURRS AND SHARP EDGES	

-	A	EN-4378	08/04/21	R.S.
-	-	RELEASE	-	-
ZONE	REV	DESCRIPTION	DATE	APPROVED

