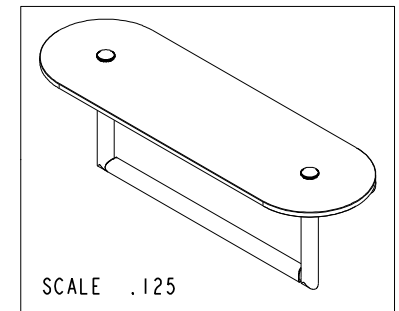
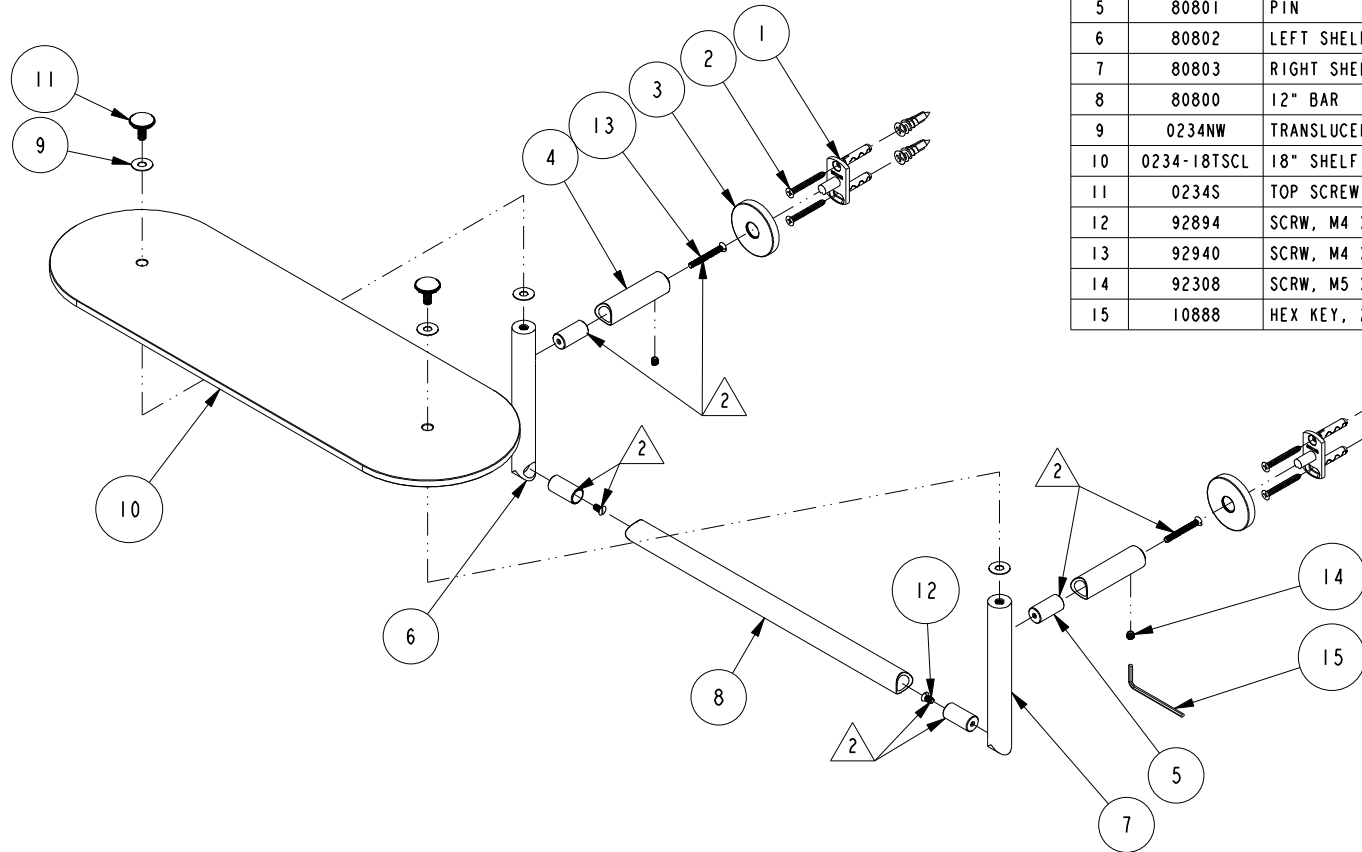


NOTES:

1. TO INSPECT ASSEMBLY, FOLLOW FIRST ARTICLE AND IN PROCESS INSPECTION SHEET.

2 APPLY LOCTITE 680



BILL OF MATERIAL (CURRENT LEVEL)

ITEM	PT/ASSY	DESCRIPTION	TYPE	QTY.
1	02XXG	MOUNTING BRACKET	PART	2
2	1-206	HARDWARE PACK	ASSEMBLY	2
3	40376	ROSETTE	PART	2
4	80799	SHELF WITH TOWEL BAR POST	PART	2
5	80801	PIN	PART	4
6	80802	LEFT SHELF/TOWEL BAR RISER	PART	1
7	80803	RIGHT SHELF/TOWEL BAR RISER	PART	1
8	80800	12" BAR	PART	1
9	0234NW	TRANSLUCENT NYLON WASHER	PART	4
10	0234-18TSCGL	18" SHELF GLASS	PART	1
11	0234S	TOP SCREW	PART	2
12	92894	SCRW, M4 X .7 X 8 SLT FLT HD ZnPLATED	PART	2
13	92940	SCRW, M4 X .7 X 35 SLT FLT HD Zn PLATED	PART	2
14	92308	SCRW, M5 X 5 SKT HD CUP PT W/ SELF LOC SS	PART	2
15	10888	HEX KEY, 2.5MM ALLOY STEEL	PART	1

ZONE	REV	DESCRIPTION	DATE	APPROVED
-	C	EN-4429	01/14/22	R. S.
-	B	EN-4032	11/22/19	R. S.
-	A	-	09/04/02	-
-	-	RELEASED	06/14/01	-

COPYRIGHT 2005 BRASSTECH, INC. THESE DRAWINGS AND THE DESIGNS DEPICTED HEREIN ARE THE PROPRIETARY PROPERTY OF BRASSTECH. ANY USE OR REPRODUCTION IS SUBJECT TO THE EXPRESS APPROVAL OF BRASSTECH. UNAUTHORIZED USE IS STRICTLY PROHIBITED. ALL RIGHTS RESERVED.

TESTING	-	-	-
ASSEMBLY	-	-	-
PLATING	-	-	-
POLISHING	-	NEXT ASSY	USED ON
MACHINING	-	APPLICATION	
TOOLING FIXTURE #	REMOVE ALL BURRS AND SHARP EDGES		

UNITS ARE: INCHES [MM]
TOLERANCES ARE:
FRACTIONS DECIMALS ANGLES
±1/16" .X ±.1 [2.5] ±°
.XX ±.06 [1.5]

(X.XXX) DENOTES CRITICAL DIMS.
ALL THREADS ARE CRITICAL

DRAWN JIMSON 01/14/22

CHECKED R.S. 01/14/22

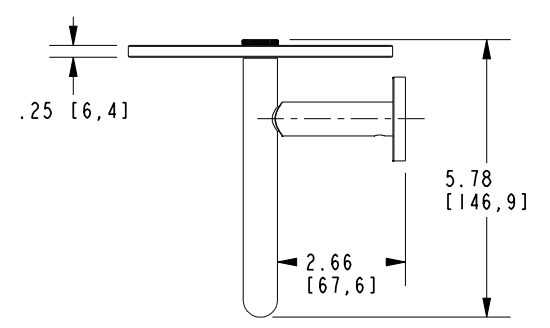
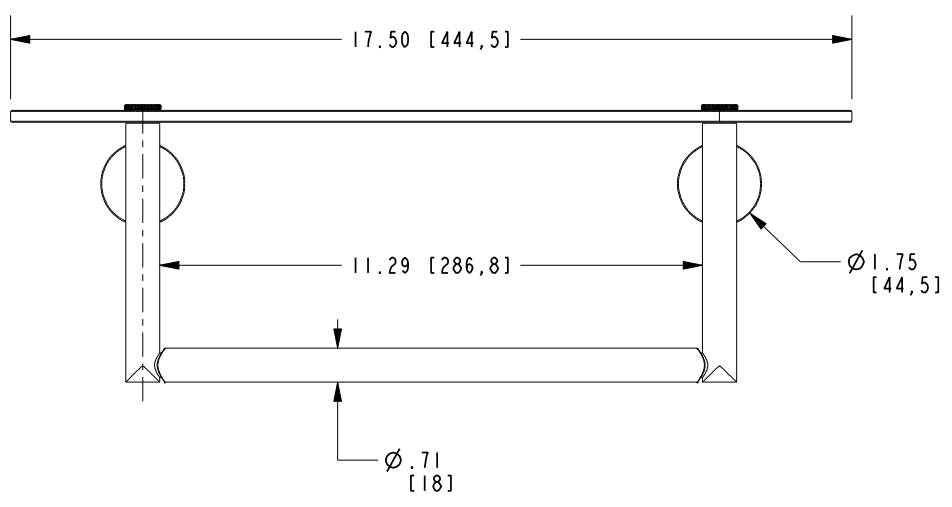
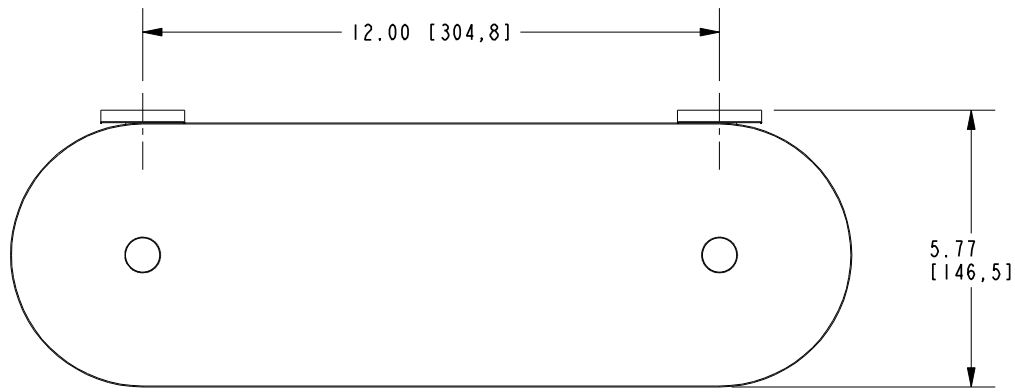
APPROVED R.S. 01/14/22

BRASSTECH 2001 CARNEGIE AVE.
INCORPORATED SANTA ANA, CA 92705
(949) 417-5207

18" GLASS SHELF W/12" TOWEL BAR

DWG NO. 0219T-18 REV C

SCALE .175 REF. - SHEET 1 OF 2



BRASSTECH		2001 E. CARNEGIE AVE. SANTA ANA, CA 92705 (949) 417-5207
DWG NO.	0219T-18	REV C
SCALE .250	REF. -	SHEET 2 OF 2