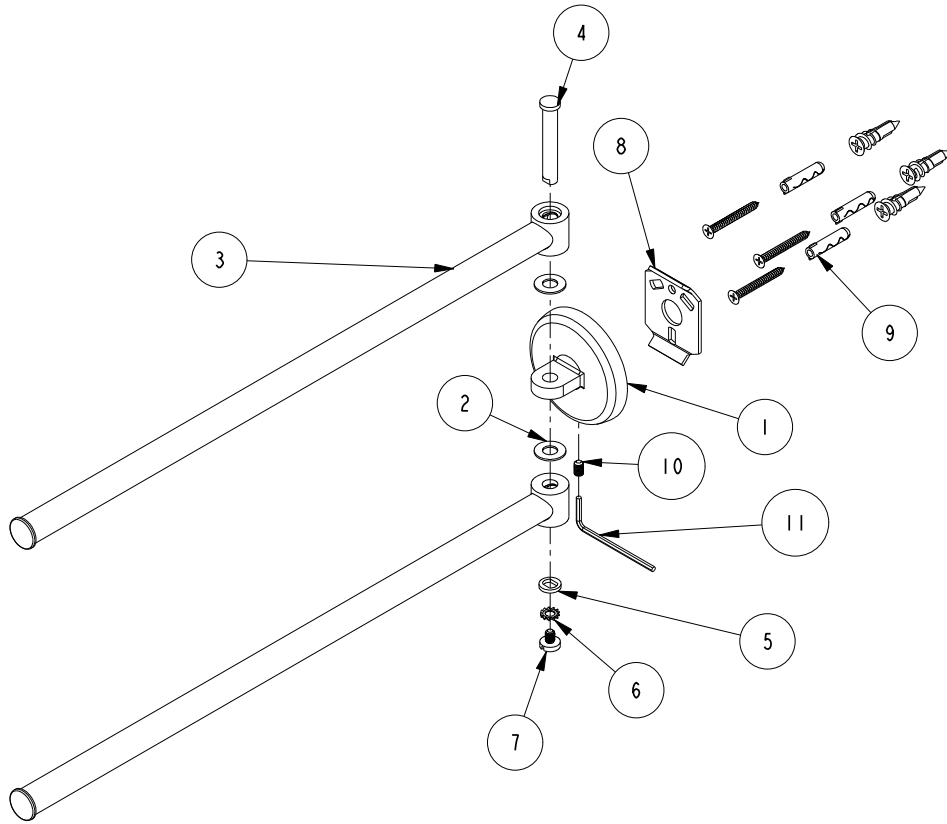


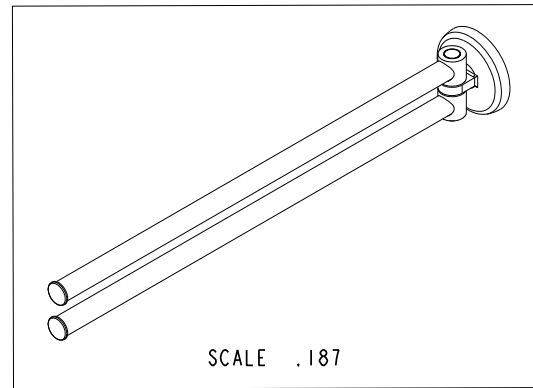
NOTES:

1. TO INSPECT ASSEMBLY, FOLLOW FIRST ARTICLE AND IN PROCESS INSPECTION SHEET.



**BILL OF MATERIAL (CURRENT LEVEL)**

| ITEM | PT/ASSY | DESCRIPTION                                           | TYPE     | QTY. |
|------|---------|-------------------------------------------------------|----------|------|
| 1    | 80837   | SWING TOWEL BAR ESCUTCHEON                            | PART     | 1    |
| 2    | 80840   | WASHER (HOTELIER PIVOT TOWEL BAR)                     | PART     | 2    |
| 3    | 8-233   | PIVOTING SWING ARM                                    | ASSEMBLY | 2    |
| 4    | 80841   | PIN (HOTELIER PIVOT TOWEL BAR)                        | PART     | 1    |
| 5    | 80839   | GUIDE WASHER                                          | PART     | 1    |
| 6    | 92949   | WSHR, 5.3 ID X 10 OD X 0.6MM THK, EXT. TOOTH LOCK, SS | PART     | 1    |
| 7    | 80838   | M5 FINISH SCREW                                       | PART     | 1    |
| 8    | 03XX    | MOUNTING BRACKET                                      | PART     | 1    |
| 9    | 1-229   | HOTEL SHELF HARDWARE PACK                             | ASSEMBLY | 1    |
| 10   | 92438   | SCRW, M5 X 8 SKT HD CUP POINT W/ SELF LOC SS          | PART     | 1    |
| 11   | 10888   | HEX KEY, 2.5MM ALLOY STEEL                            | PART     | 1    |



| ZONE | REV | DESCRIPTION | DATE     | APPROVED |
|------|-----|-------------|----------|----------|
| -    | C   | EN-4497     | 04/29/22 | R.S.     |
| -    | B   | EN-4419     | 03/07/22 | R.S.     |
| -    | A   | EN-3325     | 06/01/17 | R.S.     |
| -    | -   | RELEASED    | 01/21/02 | -        |

COPYRIGHT 2005 BRASSTECH, INC. THESE DRAWINGS AND THE DESIGNS DEPICTED HEREIN ARE THE PROPRIETARY PROPERTY OF BRASSTECH. ANY USE OR REPRODUCTION IS SUBJECT TO THE EXPRESS APPROVAL OF BRASSTECH. UNAUTHORIZED USE IS STRICTLY PROHIBITED. ALL RIGHTS RESERVED.

| TESTING           | -                                | -           | -       |
|-------------------|----------------------------------|-------------|---------|
| ASSEMBLY          | -                                | -           | -       |
| PLATING           | -                                | -           | -       |
| POLISHING         | -                                | NEXT ASSY   | USED ON |
| MACHINING         | -                                | APPLICATION |         |
| TOOLING FIXTURE # | REMOVE ALL BURRS AND SHARP EDGES |             |         |

| UNITS ARE: INCHES [MM]                                  |                |    |
|---------------------------------------------------------|----------------|----|
| FRACTIONS                                               | DECIMALS       |    |
| ANGLES                                                  | ±°             |    |
| ±1/16"                                                  | .X ±.1 [2.5]   | ±° |
|                                                         | .XX ±.06 [1.5] |    |
| (X.XXX) DENOTES CRITICAL DIMS. ALL THREADS ARE CRITICAL |                |    |
| DRAWN                                                   | -              |    |
| CHECKED                                                 | -              |    |
| APPROVED                                                | -              |    |

**BRASSTECH** 2001 CARNEGIE AVE. SANTA ANA, CA 92705 (949) 417-5207  
INCORPORATED

**DOUBLE SWING TOWEL BAR**

DWG NO. **0322-16** REV **C**

SCALE .250 REF. - SHEET 1 OF 2

15.11  
[383,7]

Ø 2.60  
[66]

1.19 [30,1]

Ø .62  
[15,6]

16.64 [422,7]

|                  |         |                                                                |   |
|------------------|---------|----------------------------------------------------------------|---|
| <b>BRASSTECH</b> |         | 2001 E. CARNEGIE AVE.<br>SANTA ANA, CA 92705<br>(949) 417-5207 |   |
| DWG NO.          | 0322-16 | REV                                                            | C |
| SCALE            | .250    | REF.                                                           | - |
| SHEET 2          |         | OF 2                                                           |   |