

4

3

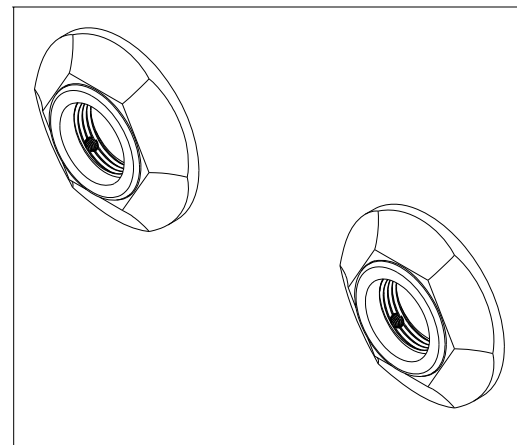
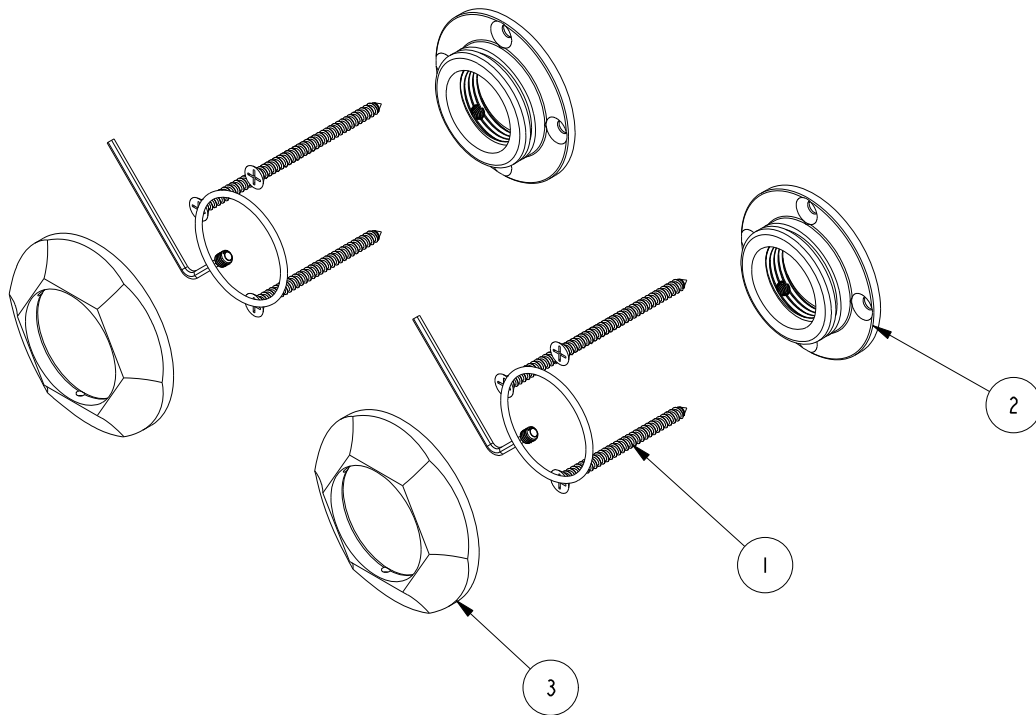
2

## NOTES:

1. TO INSPECT ASSEMBLY, FOLLOW FIRST ARTICLE AND IN PROCESS INSPECTION SHEET.

## BILL OF MATERIAL (CURRENT LEVEL)

| ITEM | PT/ASSY | DESCRIPTION                     | TYPE     | QTY. |
|------|---------|---------------------------------|----------|------|
| 1    | 199X    | GRAB BAR MOUNTING HARDWARE PACK | ASSEMBLY | 2    |
| 2    | 1995    | MOUNTING FLANGE                 | PART     | 2    |
| 3    | 0672    | DECORATIVE RING                 | PART     | 2    |



COPYRIGHT 2005 BRASSTECH, INC.  
 THESE DRAWINGS AND THE DESIGNS  
 DEPICTED HEREIN ARE THE PROPRIETARY  
 PROPERTY OF BRASSTECH. ANY USE  
 OR REPRODUCTION IS SUBJECT TO  
 THE EXPRESS APPROVAL OF BRASSTECH.  
 UNAUTHORIZED USE IS STRICTLY  
 PROHIBITED. ALL RIGHTS RESERVED.

|                   |                                  |             |         |
|-------------------|----------------------------------|-------------|---------|
| TESTING           | -                                | -           | -       |
| ASSEMBLY          | -                                | -           | -       |
| PLATING           | -                                | -           | -       |
| POLISHING         | -                                | NEXT ASSY   | USED ON |
| MACHINING         | -                                | APPLICATION |         |
| TOOLING FIXTURE # | REMOVE ALL BURRS AND SHARP EDGES |             |         |

UNITS ARE: INCHES [MM]  
 TOLERANCES ARE:

FRACTIONS DECIMALS ANGLES  
 $\pm 1/16"$   $.x \pm .1$  [2,5]  $\pm 1^\circ$   
 $.xx \pm .06$  [1,5]

(X.XXX) DENOTES CRITICAL DIMS.  
 ALL THREADS ARE CRITICAL

|          |      |          |
|----------|------|----------|
| DRAWN    | R.S. | 11/02/22 |
| CHECKED  | J.M. | 11/02/22 |
| APPROVED | J.M. | 11/02/22 |

**BRASSTECH**  
 INCORPORATED

2001 CARNEGIE AVE.  
 SANTA ANA, CA 92705  
 (949) 417-5207

GRAB BAR ESCUTECEON  
 MOUNTING KIT

|         |           |      |   |
|---------|-----------|------|---|
| DWG NO. | 1200-2400 | REV  | - |
| SCALE   | .375      | REF. | - |
| SHEET   | 1         | OF   | 2 |

4

3

2

4

3

2

D

D

C

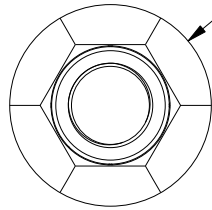
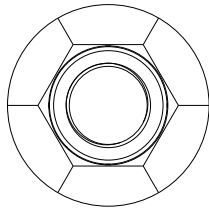
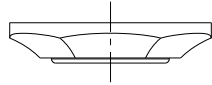
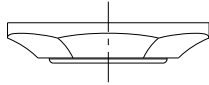
C

B

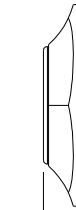
B

A

A



Ø 3.00  
[76,2]



.60  
[15,2]

|                  |           |  |        |
|------------------|-----------|--|--------|
| <b>BRASSTECH</b> |           | 2001 E. CARNEGIE AVE.<br>SANTA ANA, CA 92705<br>(949) 417-5207 |        |
| DWG NO.          | 1200-2400 | REV  | -      |
| SCALE            | .350      | REF.   | -      |
|                  |           | SHEET  | 2 OF 2 |

4

3

2