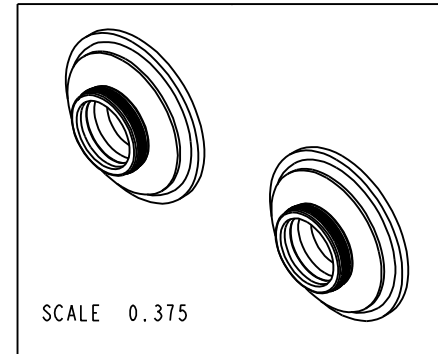
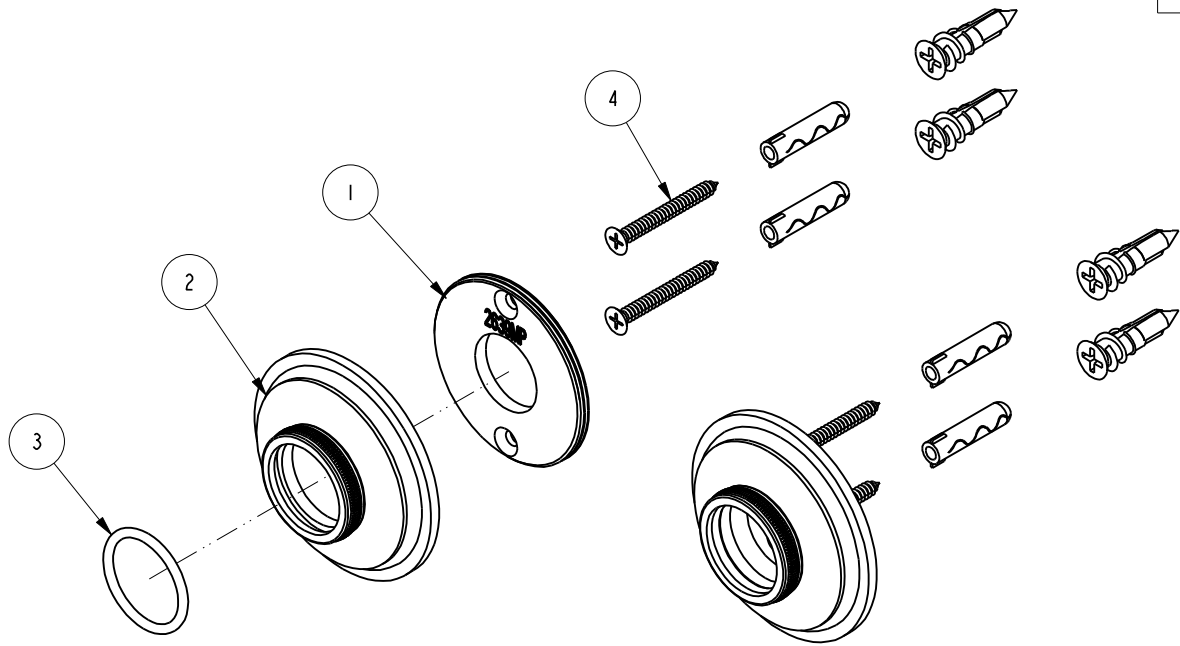


NOTES:

1. TO INSPECT ASSEMBLY, FOLLOW FIRST ARTICLE AND IN PROCESS INSPECTION SHEET.

**BILL OF MATERIAL (CURRENT LEVEL)**

ITEM	PT/ASSY	DESCRIPTION	TYPE	QTY.
1	2639MP	MOUNTING PLATE	PART	2
2	2600C	SHOWER ROD ROSETTE	PART	2
3	91073	O-RING, #2-120, EPDM, 65-75 DURO	PART	2
4	1-206	HARDWARE PACK	ASSEMBLY	2



TESTING	-	-	-
ASSEMBLY	-	-	-
PLATING	-	-	-
POLISHING	-	NEXT ASSY	USED ON
MACHINING	-	APPLICATION	
TOOLING FIXTURE #	REMOVE ALL BURRS AND SHARP EDGES		

**BRASSTECH** 2001 CARNEGIE AVE.  
INCORPORATED SANTA ANA, CA 92705  
(949) 417-5207

**SHOWER ROD BRACKETS**

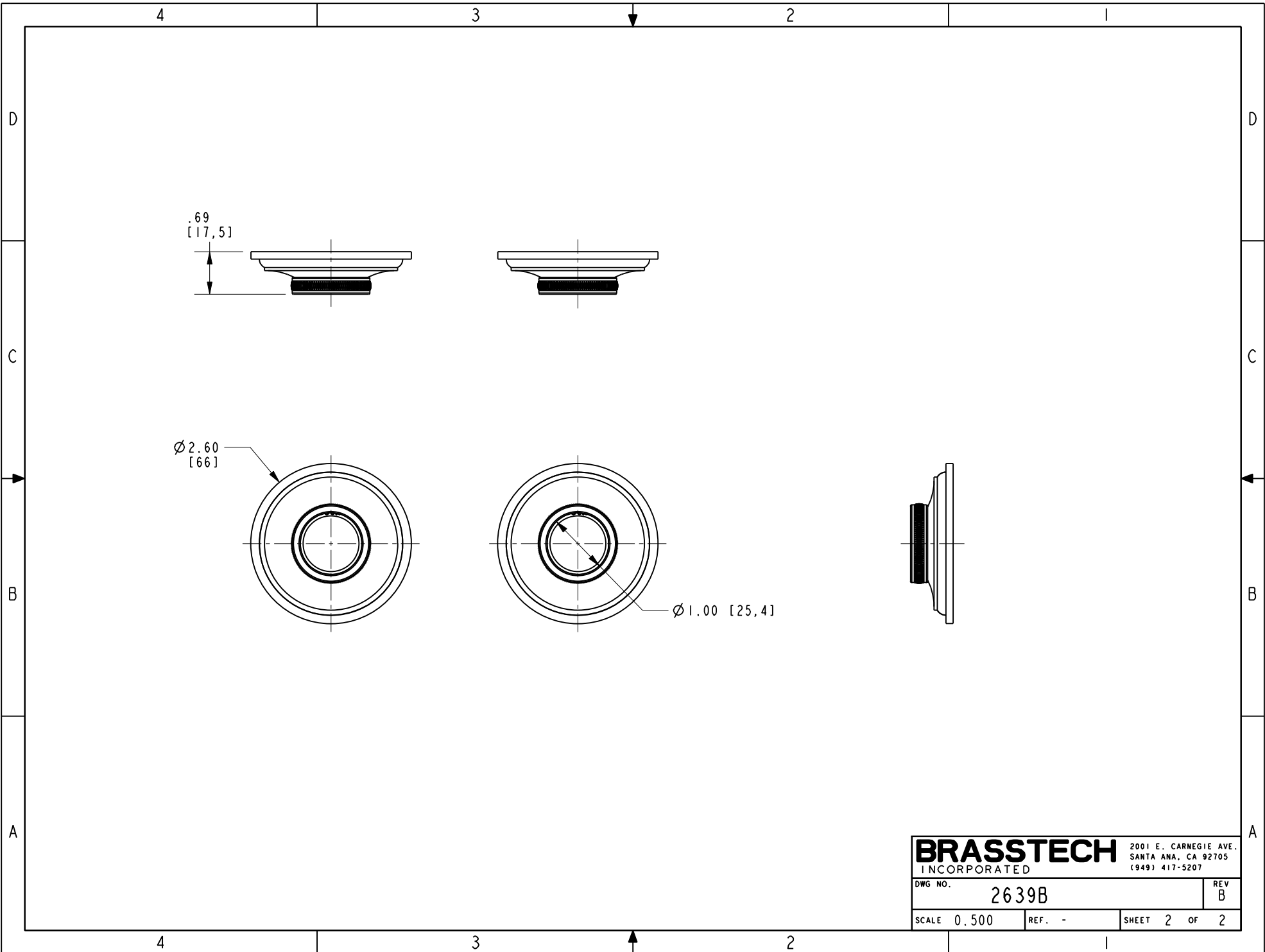
DWG NO. **2639B** REV **B**

SCALE 0.500 REF. - SHEET 1 OF 2

ZONE	REV	DESCRIPTION	DATE	APPROVED
-	B	EN-4418	12/01/21	R.S.
-	A	EN-2964	10/26/15	J.M.
-	-	-	03/01/02	-

COPYRIGHT 2005 BRASSTECH, INC. THESE DRAWINGS AND THE DESIGNS DEPICTED HEREIN ARE THE PROPRIETARY PROPERTY OF BRASSTECH. ANY USE OR REPRODUCTION IS SUBJECT TO THE EXPRESS APPROVAL OF BRASSTECH. UNAUTHORIZED USE IS STRICTLY PROHIBITED. ALL RIGHTS RESERVED.

UNITS ARE: INCHES [MM]	-	-
TOLERANCES ARE:	-	-
FRACTIONS DECIMALS ANGLES	-	-
±1/16" .X ±.1 [2.5] ±1°	-	-
.XX ±.06 [1.5]	-	-
(X.XXX) DENOTES CRITICAL DIMS.	-	-
ALL THREADS ARE CRITICAL	-	-
DRAWN R.S.	10/26/15	-
CHECKED J.M.	10/26/15	-
APPROVED J.M.	10/26/15	-



<b>BRASSTECH</b>		2001 E. CARNEGIE AVE. SANTA ANA, CA 92705 (949) 417-5207
DWG NO.	2639B	REV B
SCALE 0.500	REF. -	SHEET 2 OF 2