

NOTES:

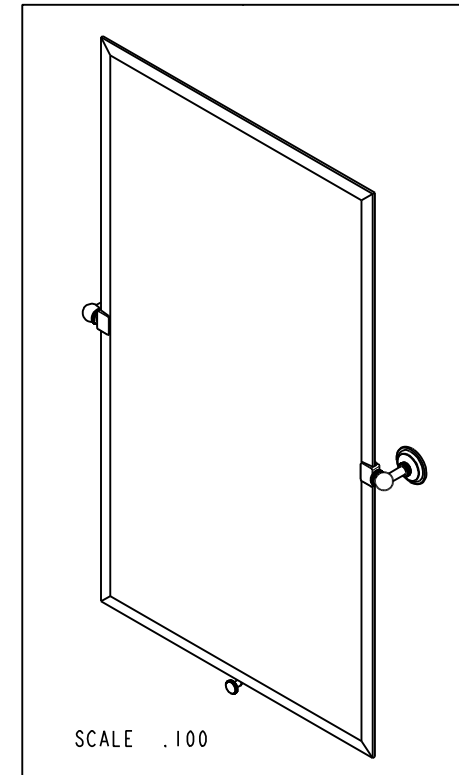
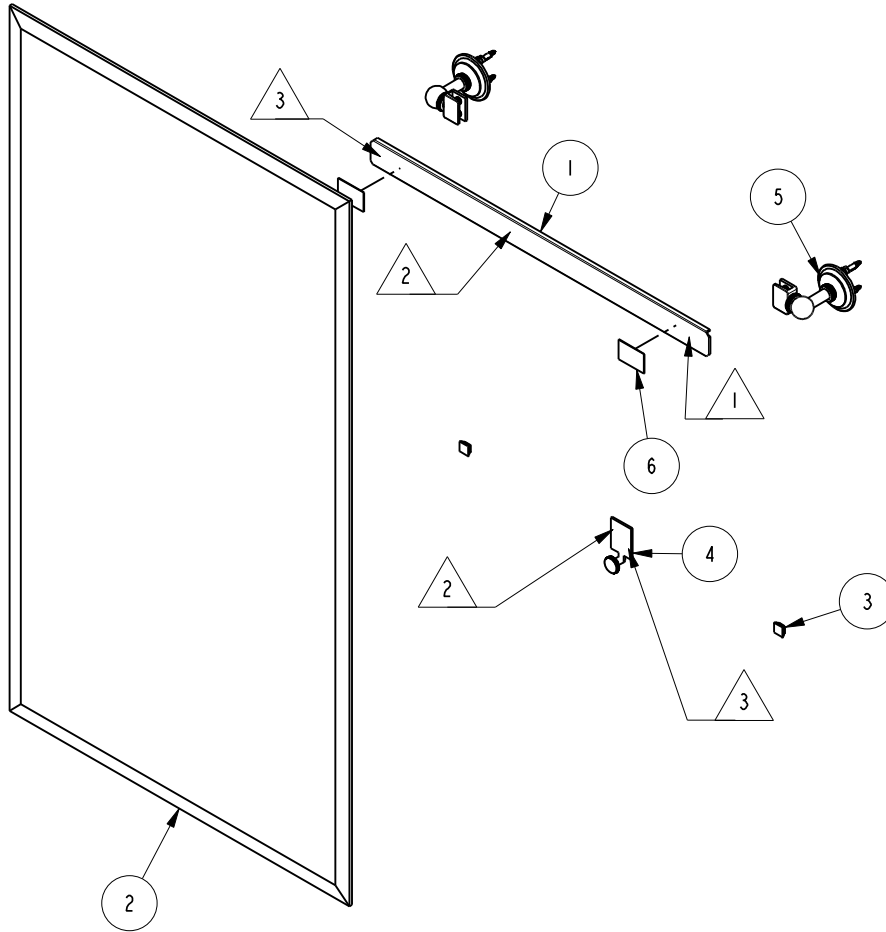
1. TO INSPECT ASSEMBLY, FOLLOW FIRST ARTICLE AND IN PROCESS INSPECTION SHEET.

2 APPLY PALMER MIRROR MASTIC

3 LOCATION OF VHB TAPE

BILL OF MATERIAL (CURRENT LEVEL)

ITEM	PT/ASSY	DESCRIPTION	TYPE	QTY.
1	2642SC	20" SUPPORT CHANEL	PART	1
2	C2642	20" x 36" MIRROR GLASS	PART	1
3	91477	ADHESIVE BACKED BUMPER	PART	2
4	2641-FPA	FINGER PULL	ASSEMBLY	1
5	2641B	LONDON TER MIRROR BRACKETS	ASSEMBLY	1
6	91462	VHB TAPE 1" X 1 1/2" LONG	PART	2



ZONE	REV	DESCRIPTION	DATE	APPROVED
-	C	EN-4300p	06/16/21	R.S.
-	B	EN-2148	04/30/12	-
-	A	EN-1477	02/19/10	-

COPYRIGHT 2005 BRASSTECH, INC. THESE DRAWINGS AND THE DESIGNS DEPICTED HEREIN ARE THE PROPRIETARY PROPERTY OF BRASSTECH. ANY USE OR REPRODUCTION IS SUBJECT TO THE EXPRESS APPROVAL OF BRASSTECH. UNAUTHORIZED USE IS STRICTLY PROHIBITED. ALL RIGHTS RESERVED.

TESTING	-	-	-
ASSEMBLY	-	-	-
PLATING	-	-	-
POLISHING	-	NEXT ASSY	USED ON
MACHINING	-	APPLICATION	
TOOLING FIXTURE #	REMOVE ALL BURRS AND SHARP EDGES		

UNITS ARE: INCHES [MM]
TOLERANCES ARE:
FRACTIONS DECIMALS ANGLES
±1/16" .X ±.1 [2.5] ±°
.XX ±.06 [1.5]

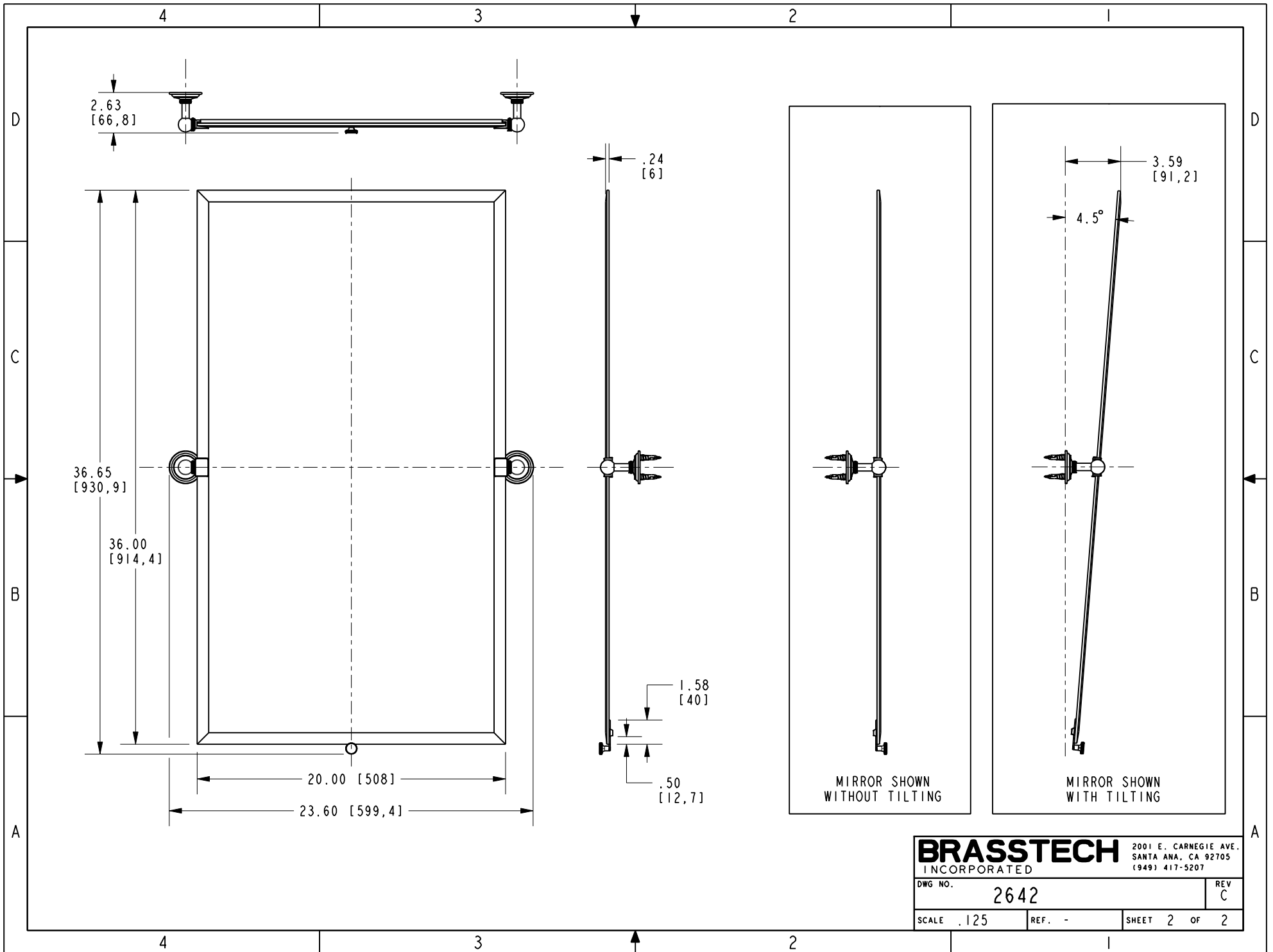
(X.XXX) DENOTES CRITICAL DIMS.
ALL THREADS ARE CRITICAL

DRAWN	JINSON	06/16/21
CHECKED	R.S.	06/16/21
APPROVED	R.S.	06/16/21

BRASSTECH 2001 CARNEGIE AVE.
INCORPORATED SANTA ANA, CA 92705
(949) 417-5207

SMALL MIRROR GLASS ASSEMBLY

DWG NO.	2642	REV	C
SCALE	.150	REF.	-
SHEET	1	OF	2



BRASSTECH		2001 E. CARNEGIE AVE.
INCORPORATED		SANTA ANA, CA 92705
		(949) 417-5207
DWG NO.	2642	REV C
SCALE .125	REF. -	SHEET 2 OF 2