

4

3

2

1

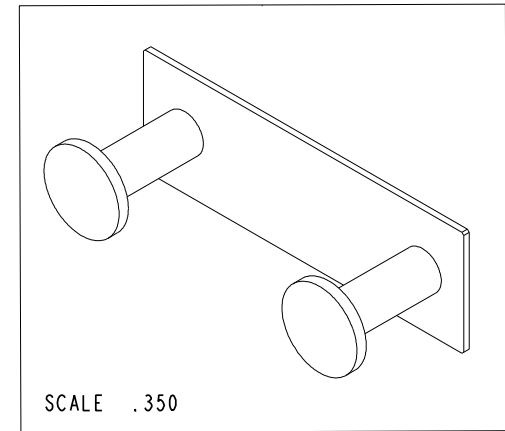
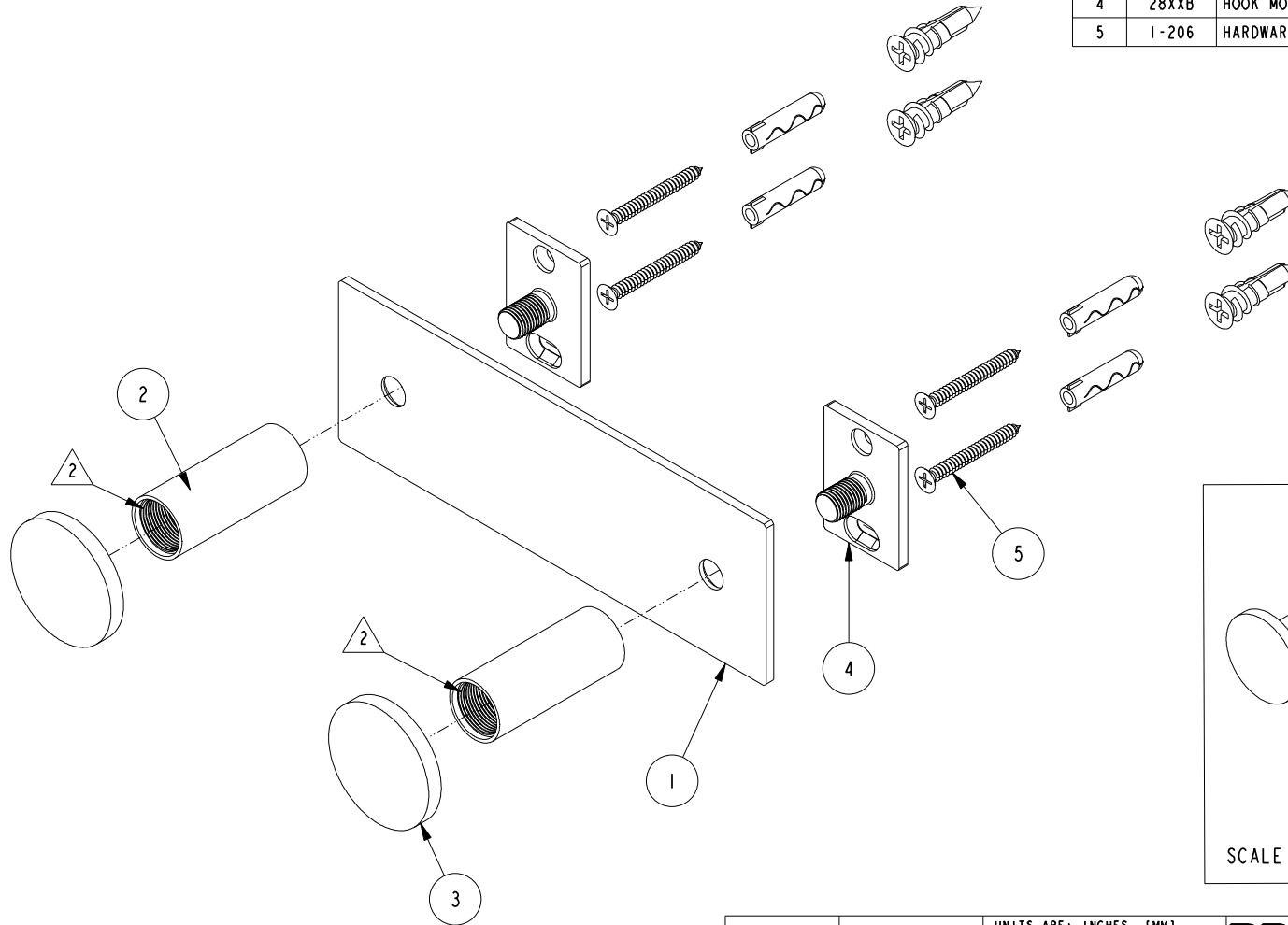
NOTES:

1. TO INSPECT ASSEMBLY, FOLLOW FIRST ARTICLE AND IN PROCESS INSPECTION SHEET.

2 APPLY LOCTITE 680 TO THREADS

BILL OF MATERIAL (CURRENT LEVEL)

| ITEM | PT/ASSY | DESCRIPTION | TYPE | QTY. |
|------|---------|-----------------------|----------|------|
| 1 | 40790 | DOUBLE HOOK BACKPLATE | PART | 1 |
| 2 | 40786 | HOOK POST | PART | 2 |
| 3 | 40785 | HOOK FINAL | PART | 2 |
| 4 | 28XXB | HOOK MOUNTING BRACKET | PART | 2 |
| 5 | 1-206 | HARDWARE PACK | ASSEMBLY | 2 |



SCALE .350

A

| - | C | EN-4430 | 01/28/22 | R. S. |
|------|-----|-------------|----------|----------|
| - | B | EN-4091 | 02/03/20 | R. S. |
| - | A | EN-4032 | 11/22/19 | R. S. |
| - | - | RELEASED | 02/16/05 | - |
| ZONE | REV | DESCRIPTION | DATE | APPROVED |

COPYRIGHT 2005 BRASSTECH, INC. THESE DRAWINGS AND THE DESIGNS DEPICTED HEREIN ARE THE PROPRIETARY PROPERTY OF BRASSTECH. ANY USE OR REPRODUCTION IS SUBJECT TO THE EXPRESS APPROVAL OF BRASSTECH. UNAUTHORIZED USE IS STRICTLY PROHIBITED. ALL RIGHTS RESERVED.

| | | | |
|-------------------|----------------------------------|-------------|---------|
| TESTING | - | - | - |
| ASSEMBLY | - | - | - |
| PLATING | - | - | - |
| POLISHING | - | NEXT ASSY | USED ON |
| MACHINING | - | APPLICATION | |
| TOOLING FIXTURE # | REMOVE ALL BURRS AND SHARP EDGES | | |

| | | |
|---|----------------|----------|
| UNITS ARE: INCHES [MM] | | |
| TOLERANCES ARE: | | |
| FRACTIONS | DECIMALS | ANGLES |
| ±1/16" | .X ±.1 [2.5] | ±1° |
| | .XX ±.06 [1.5] | |
| (X.XXX) DENOTES CRITICAL DIMS. ALL THREADS ARE CRITICAL | | |
| DRAWN | JIMSON | 10/25/21 |
| CHECKED | R.S. | 10/25/21 |
| APPROVED | R.S. | 10/25/21 |

BRASSTECH INCORPORATED

2001 CARNEGIE AVE. SANTA ANA, CA 92705 (949) 417-5207

DOUBLE ROBE HOOK

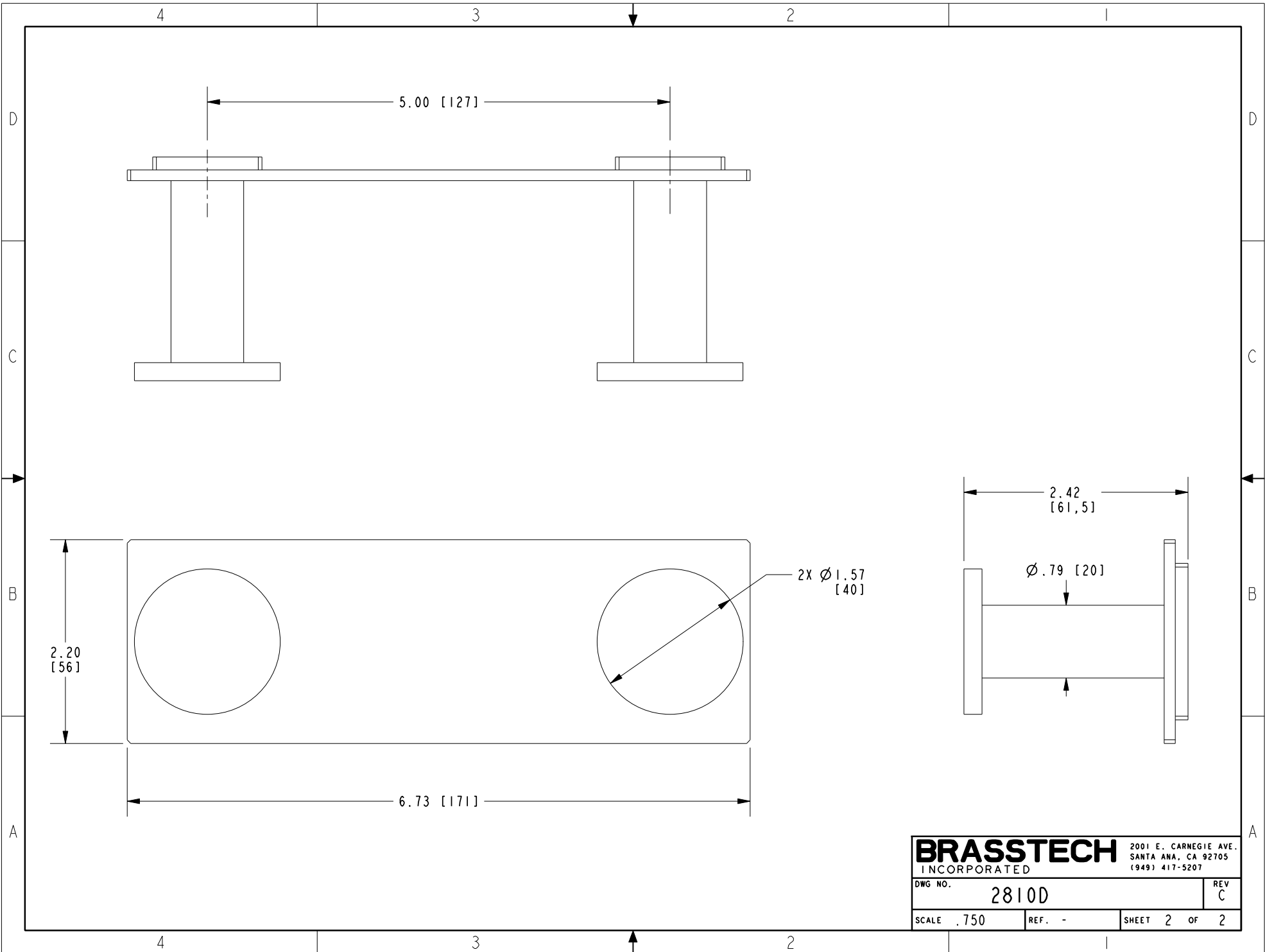
| | | | |
|---------|-------|------|---|
| DWG NO. | 2810D | REV | C |
| SCALE | .500 | REF. | - |
| SHEET | 1 | OF | 2 |

4

3

2

1



| | | | |
|------------------|-------|--|---|
| BRASSTECH | | 2001 E. CARNEGIE AVE. SANTA ANA, CA 92705 (949) 417-5207 | |
| DWG NO. | 2810D | REV | C |
| SCALE | .750 | REF. | - |
| SHEET 2 | | OF 2 | |