

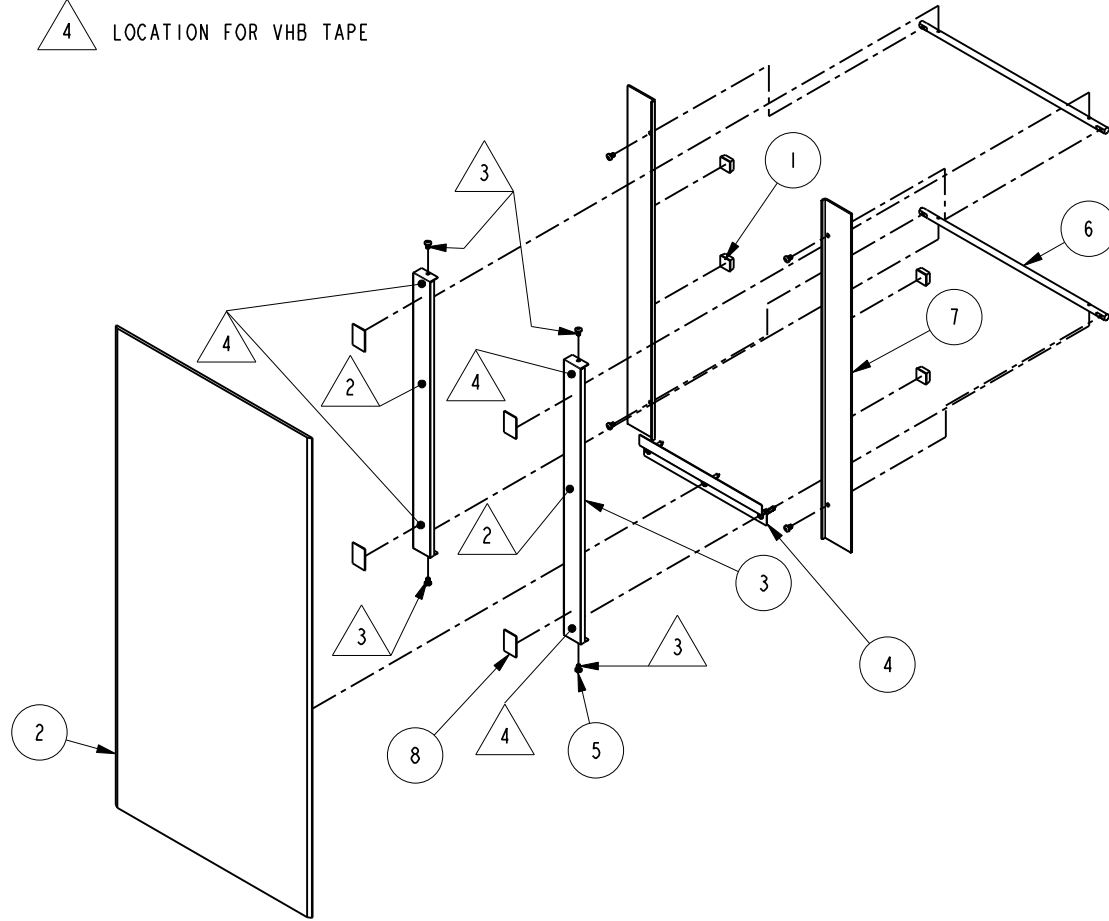
NOTES:

1. TO INSPECT ASSEMBLY, FOLLOW FIRST ARTICLE AND IN PROCESS INSPECTION SHEET.

2 APPLY PLAMER MIRROR MASTIC

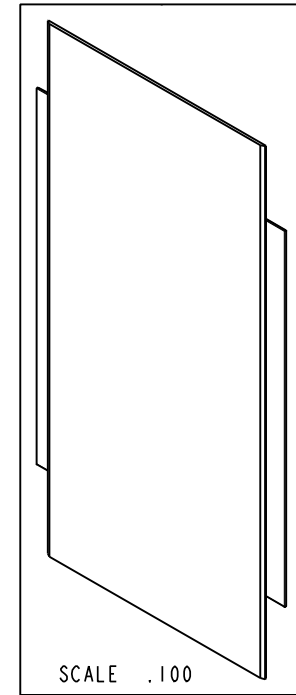
3 APPLY LOCTITE 680.

4 LOCATION FOR VHB TAPE



BILL OF MATERIAL (CURRENT LEVEL)

ITEM	PT/ASSY	DESCRIPTION	TYPE	QTY.
1	BM9	CLEAR ADHESIVE BACKED BUMPER	PART	4
2	64_292D	MIRROR GLASS	PART	1
3	MTM-003	MIRROR VERTICAL CHANNEL	PART	2
4	MTM-002	MOUNTING KIT	ASSEMBLY	1
5	92398	SCRW, M5 X .8 X 8 PHIL PAN HD Zn PLATED	PART	8
6	284IT	TIE ROD	PART	2
7	40459	TRIM PLATE	PART	2
8	91462	VHB TAPE 1" X 1 1/2" LONG	PART	4



ZONE	REV	DESCRIPTION	DATE	APPROVED
-	E	EN-4300p	06/16/21	R.S.
-	D	EN-2148	04/30/12	
-	C	EN-1974	11/21/11	-
-	B	EN-1949	11/03/11	-
-	A	EN-1465	02/12/10	-

COPYRIGHT 2005 BRASSTECH, INC. THESE DRAWINGS AND THE DESIGNS DEPICTED HEREIN ARE THE PROPRIETARY PROPERTY OF BRASSTECH. ANY USE OR REPRODUCTION IS SUBJECT TO THE EXPRESS APPROVAL OF BRASSTECH. UNAUTHORIZED USE IS STRICTLY PROHIBITED. ALL RIGHTS RESERVED.

TESTING	-	-	-
ASSEMBLY	-	-	-
PLATING	-	-	-
POLISHING	-	NEXT ASSY	USED ON
MACHINING	-	APPLICATION	
TOOLING FIXTURE #	REMOVE ALL BURRS AND SHARP EDGES		

UNITS ARE: INCHES [MM]
TOLERANCES ARE:
FRACTIONS DECIMALS ANGLES
±1/16" .X ±.1 [2.5] ±°
.XX ±.06 [1.5]

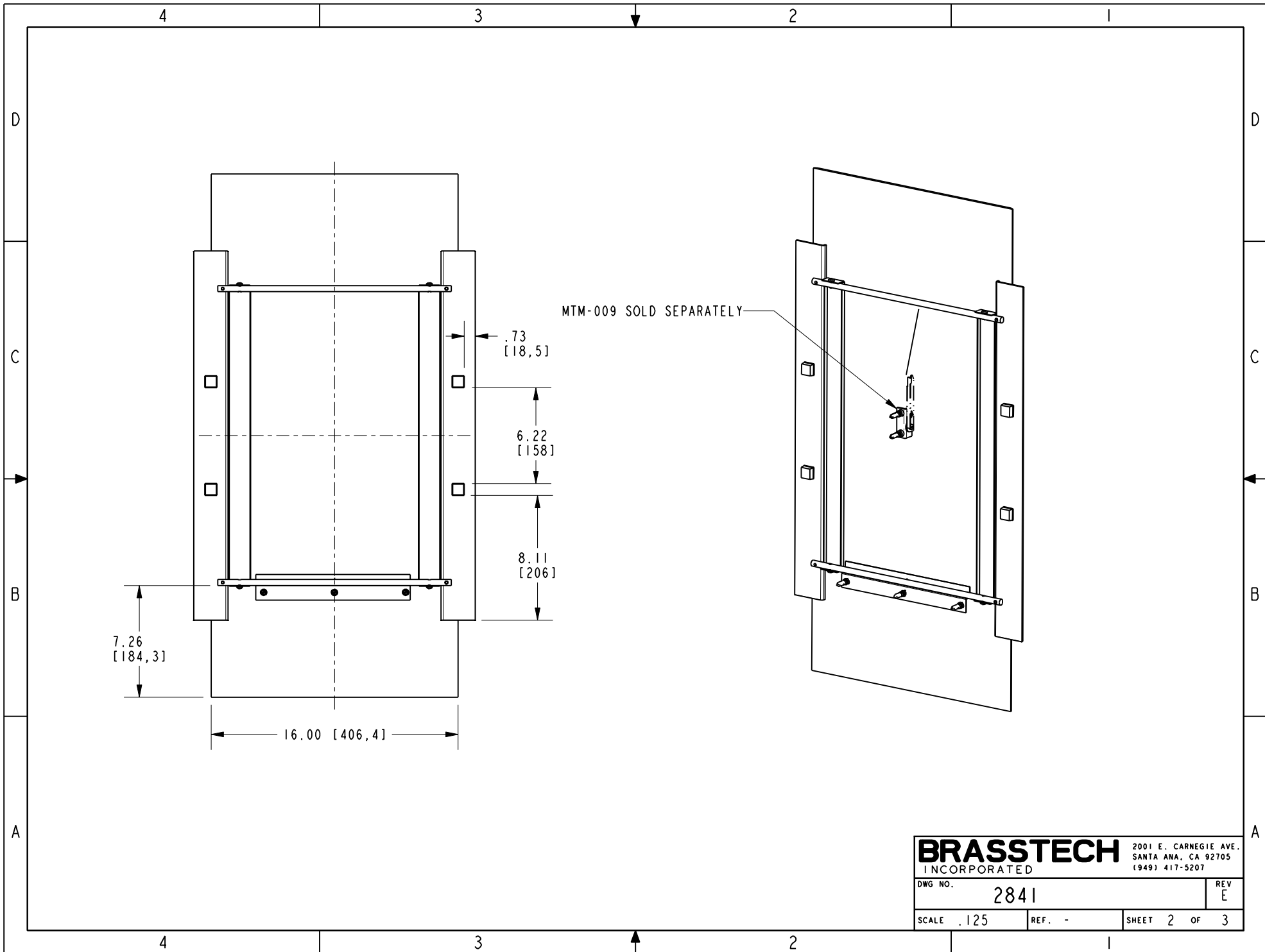
(X.XXX) DENOTES CRITICAL DIMS.
ALL THREADS ARE CRITICAL

DRAWN	JINSON	06/16/21
CHECKED	R.S.	06/16/21
APPROVED	R.S.	06/16/21

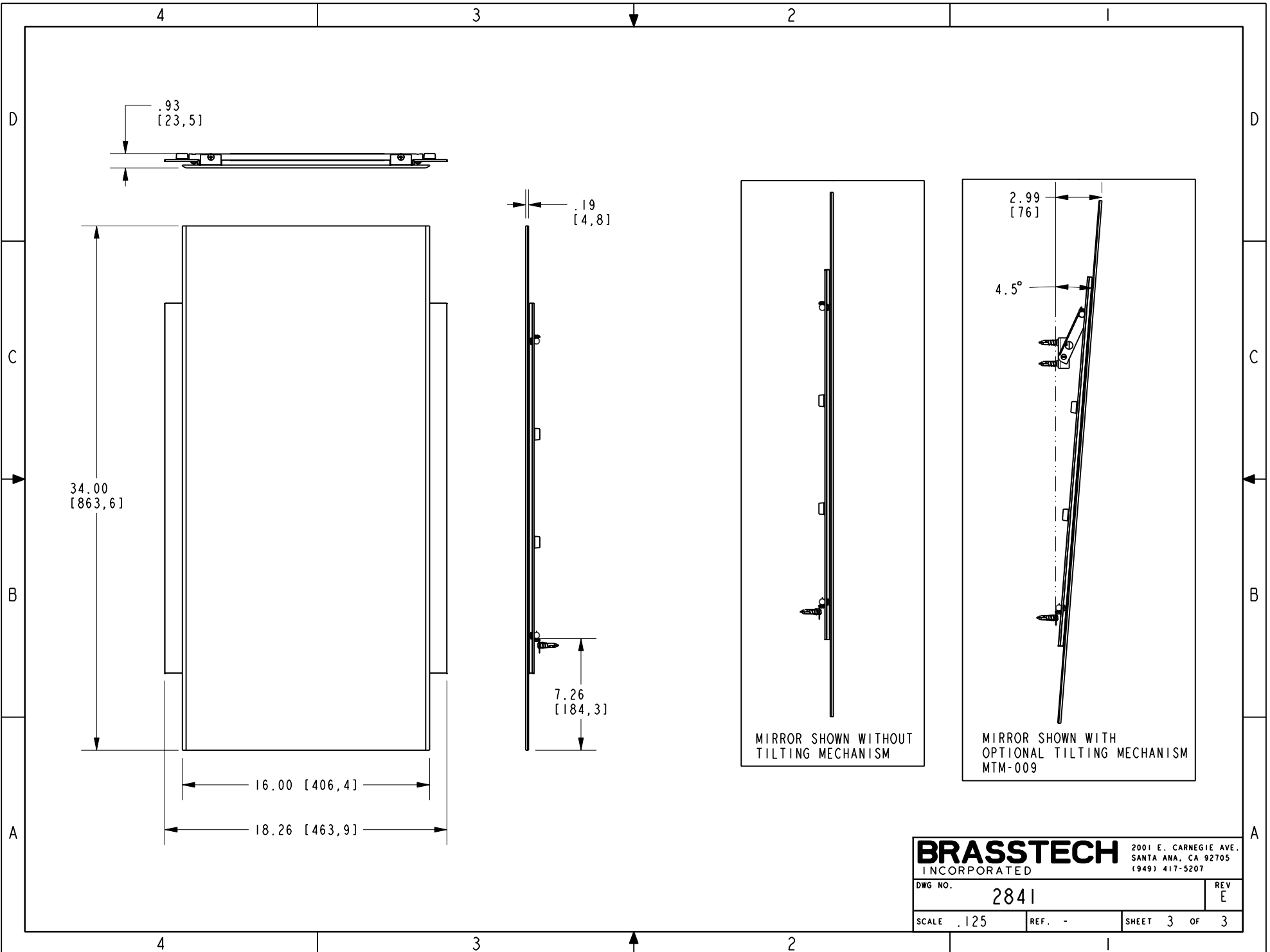
BRASSTECH 2001 CARNEGIE AVE.
INCORPORATED SANTA ANA, CA 92705
(949) 417-5207

SURFACE FRAMELESS BEVELED MIRROR

DWG NO.	2841	REV	E
SCALE	.090	REF.	-
SHEET	1	OF	3



BRASSTECH		2001 E. CARNEGIE AVE. SANTA ANA, CA 92705 (949) 417-5207	
DWG NO.	2841	REV	E
SCALE	.125	REF.	-
SHEET 2		OF 3	



BRASSTECH		2001 E. CARNEGIE AVE. SANTA ANA, CA 92705 (949) 417-5207	
DWG NO.	2841	REV	E
SCALE	.125	REF.	-
		SHEET	3 OF 3