

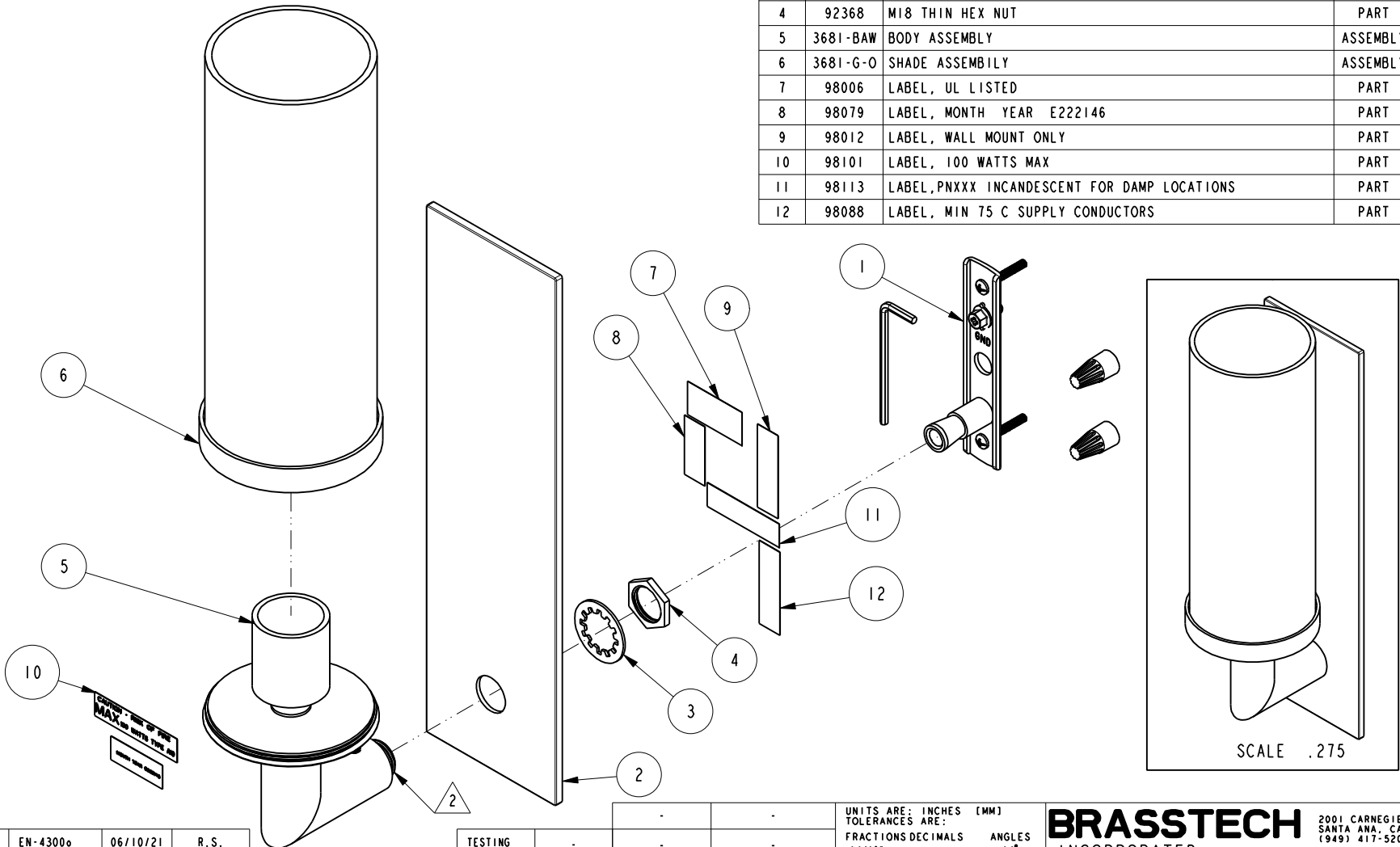
NOTES:

1. TO INSPECT ASSEMBLY, FOLLOW FIRST ARTICLE AND IN PROCESS INSPECTION SHEET.

2. APPLY LOCTITE 680.

**BILL OF MATERIAL (CURRENT LEVEL)**

ITEM	PT/ASSY	DESCRIPTION	TYPE	QTY.
1	3681R-CB	CROSS BAR ASSEMBLY	ASSEMBLY	1
2	2881-BP	SINGLE LIGHT BACK PLATE	PART	1
3	92367	WSHR, 19 ID X 30 OD X 1.4MM THK, INT. TOOTH, LOCK, SS	PART	1
4	92368	M18 THIN HEX NUT	PART	1
5	3681-BAW	BODY ASSEMBLY	ASSEMBLY	1
6	3681-G-O	SHADE ASSEMBLY	ASSEMBLY	1
7	98006	LABEL, UL LISTED	PART	1
8	98079	LABEL, MONTH YEAR E222146	PART	2
9	98012	LABEL, WALL MOUNT ONLY	PART	1
10	98101	LABEL, 100 WATTS MAX	PART	1
11	98113	LABEL, PNXXX INCANDESCENT FOR DAMP LOCATIONS	PART	1
12	98088	LABEL, MIN 75 C SUPPLY CONDUCTORS	PART	1



**CAUTION - HOT SURFACE**  
**MAX. 100 WATTS (TYPE 100)**  
 (Additional illegible text)

ZONE	REV	DESCRIPTION	DATE	APPROVED
-	E	EN-4300	06/10/21	R.S.
-	D	EN-3127	08/29/16	R.S.
-	C	EN-2574	08/06/13	-
-	B	EN-2352	11/12/12	-
-	A	EN-1283	11/13/09	-

COPYRIGHT 2005 BRASSTECH, INC. THESE DRAWINGS AND THE DESIGNS DEPICTED HEREIN ARE THE PROPRIETARY PROPERTY OF BRASSTECH. ANY USE OR REPRODUCTION IS SUBJECT TO THE EXPRESS APPROVAL OF BRASSTECH. UNAUTHORIZED USE IS STRICTLY PROHIBITED. ALL RIGHTS RESERVED.

TESTING	ASSEMBLY	PLATING	POLISHING	MACHINING	TOOLING FIXTURE #
-	-	-	-	-	-
-	-	-	-	-	-
-	-	-	-	-	-
-	-	-	-	-	-
-	-	-	-	-	-
-	-	-	-	-	-
-	-	-	-	-	-
-	-	-	-	-	-
-	-	-	-	-	-

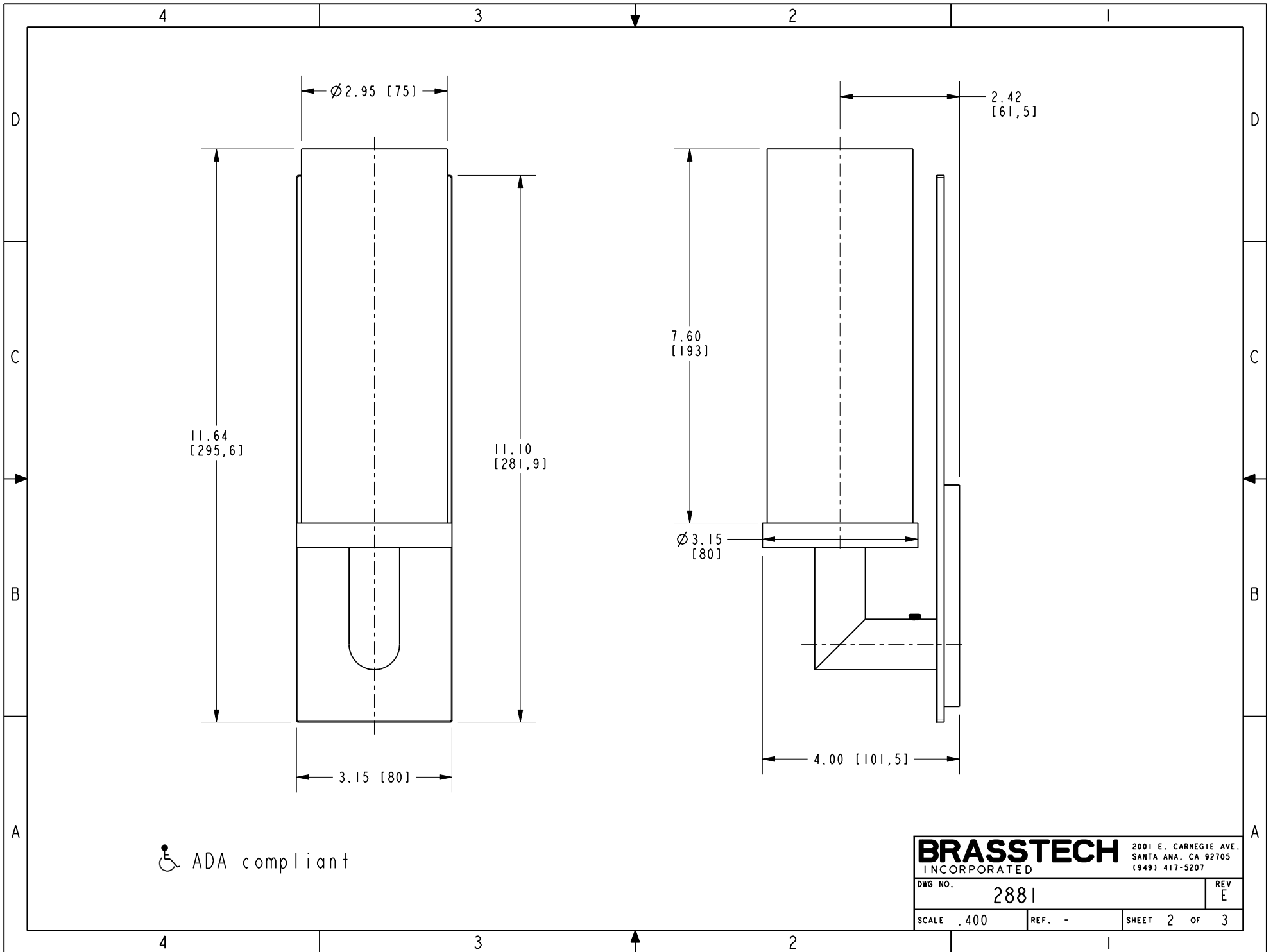
UNITS ARE: INCHES [MM]  
 TOLERANCES ARE:  
 FRACTIONS DECIMALS ANGLES  
 $\pm 1/16"$  .X  $\pm .1$  [2.5]  $\pm 1^\circ$   
 .XX  $\pm .06$  [1.5]  
 (X.XXX) DENOTES CRITICAL DIMS.  
 ALL THREADS ARE CRITICAL  
 DRAWN JINSON 06/10/21  
 CHECKED R.S. 06/10/21  
 APPROVED R.S. 06/10/21


**BRASSTECH** 2001 CARNEGIE AVE.  
 INCORPORATED SANTA ANA, CA 92705  
 (949) 417-5207

**SINGLE LIGHTSHADE ASSEMBLY**

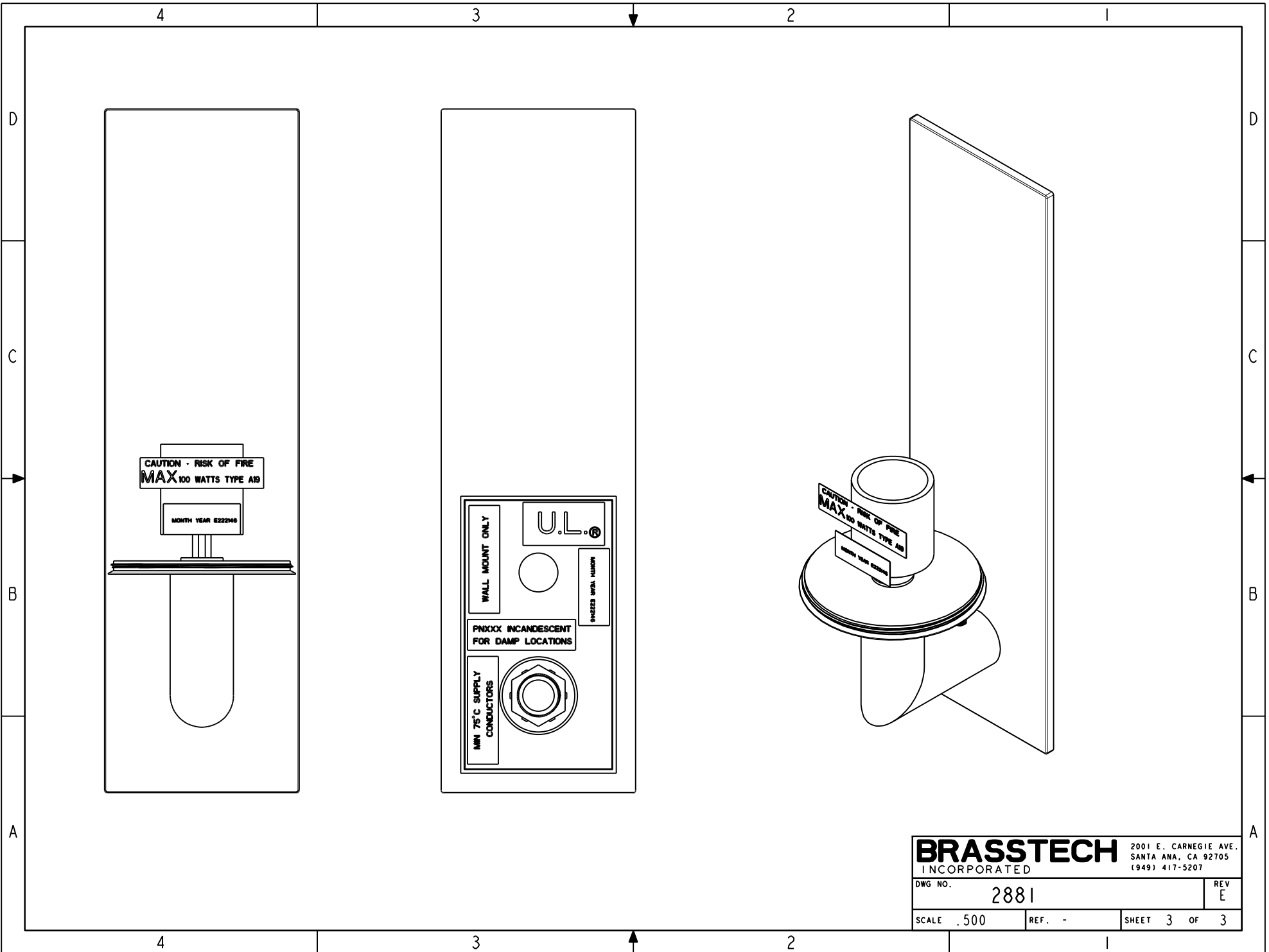
DWG NO. **2881** REV **E**

SCALE **.375** REF. - SHEET **1** OF **3**



 ADA compliant

<b>BRASSTECH</b>		2001 E. CARNEGIE AVE. SANTA ANA, CA 92705 (949) 417-5207	
DWG NO.	2881	REV	E
SCALE	.400	REF.	-
SHEET 2		OF 3	



**BRASSTECH** 2001 E. CARNEGIE AVE.  
 INCORPORATED SANTA ANA, CA 92705  
 (949) 417-5207

DWG NO.	2881	REV	E
SCALE	.500	REF.	-
SHEET 3		OF 3	