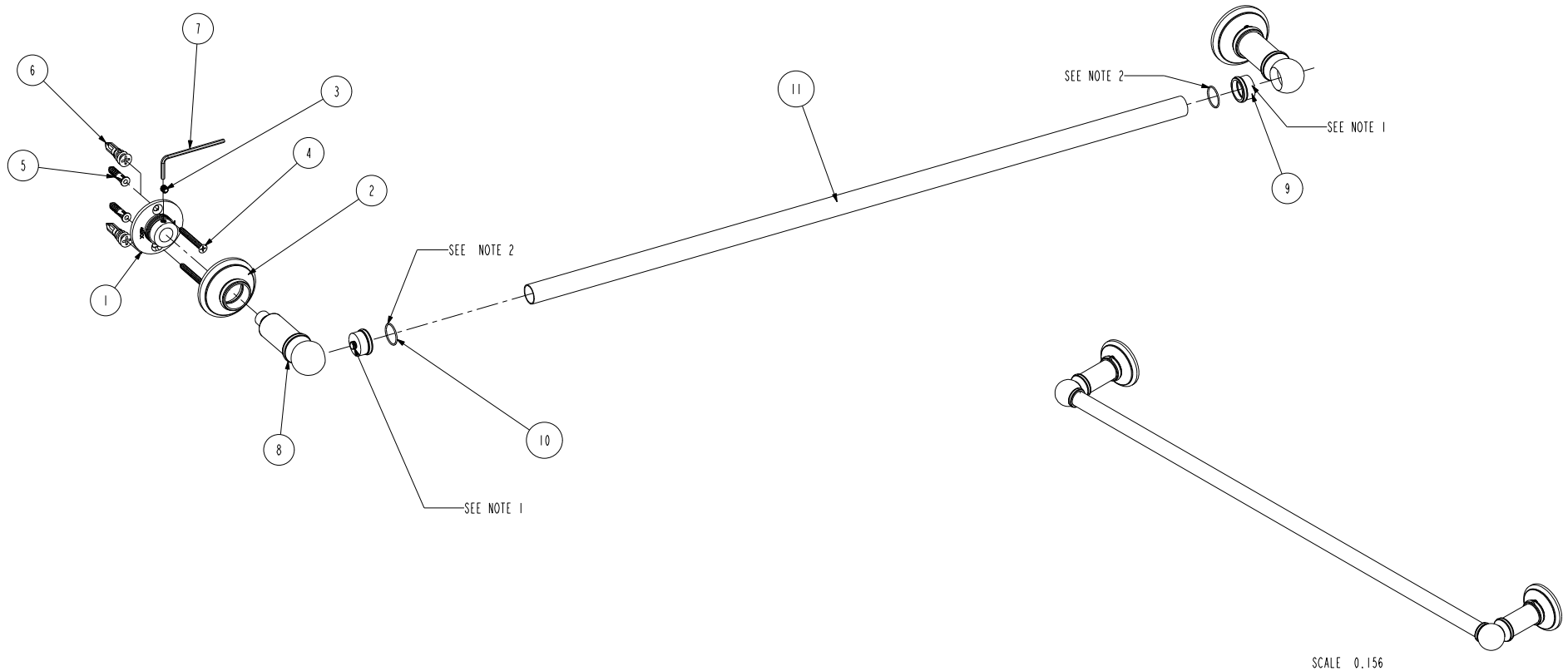


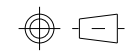
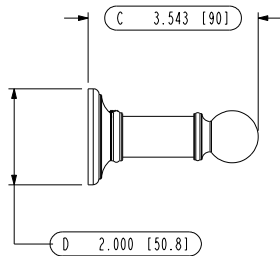
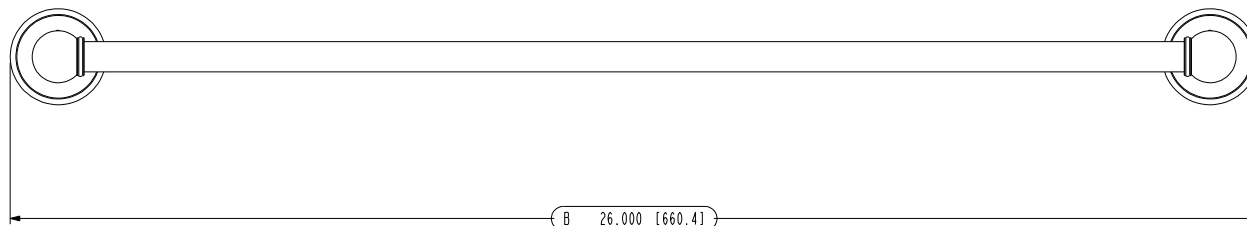
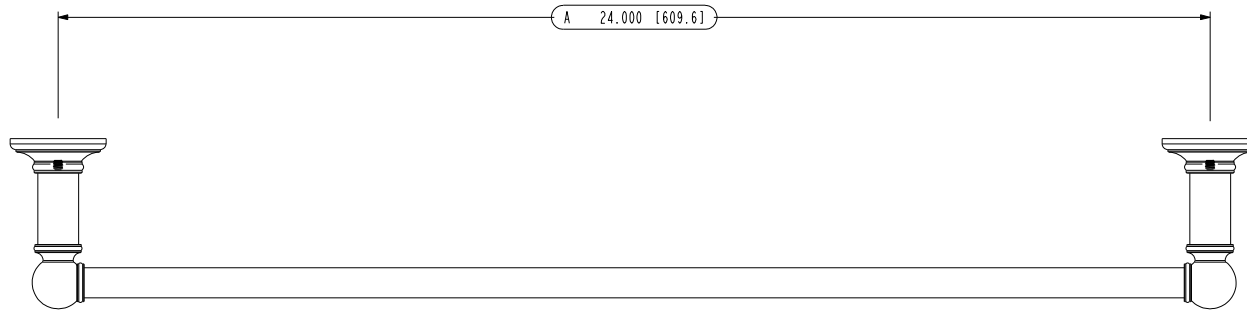
BILL OF MATERIAL

ITEM	PT/ASSY	DESCRIPTION	TYPE	QTY.	DWG. NO.
1	45XX	MOUNTING FLANGE	PART	2	45A-002
2	4500	ROSETTE	PART	2	45A-003
3	92308	SCRW, M5 X 5 CUP POINT 18-8 SS SOCKET HD SET (MMC# 92015A117)	PART	2	-
4	8_1_5PFS	NO.8 x 1-1/2" PHILLIPS FLAT HEAD STAINLESS STEEL	PART	4	-
5	GCA	NO. 8 -10 WALL ANCHOR PLASTIC	PART	4	-
6	SSPM	DRYWALL ANCHOR	PART	4	-
7	10888	2.5MM ALLOY STEEL HEX KEY	PART	1	-
8	4550P	TOWEL BAR/ TISSUE HOLDER POST	PART	2	45A-004
9	4550F	POST FLANGE	PART	2	45A-005
10	RM16-1	16mm ID x 1mm BUNA-N- O-RING	PART	2	-
11	4553	TOWEL BAR TUBE	PART	1	4553



- ASSEMBLY NOTES:
 1. APPLY PERMANENT THREAD LOCKER (LOCTITE 262).
 2. DURING FINAL ASSEMBLY: APPLY THIN LAYER OF (LOCTITE 404) AFTER O-RINGS ARE INSTALLED AND JUST BEFORE THE TOWEL BAR.

FINISHES: 40- ANTIQUE GOLD, 45- ANTIQUE SILVER, 100- 011 RUBBED BRONZE, 14- POLISHED NICKEL, 15- SATIN NICKEL, 26- POLISHED CHROME					GINGER
MATERIAL: STAINLESS MOUNTING HARDWARE, VARIOUS BRASSES					
PART NO.	4503	24" TOWEL BAR ASS'Y			DWG. NO.
DATE: 6.28.07	REV. DATE	REV. A	SCALE 1:4	COLUMNAR	4503



FINISHES: 00- ANTIQUE GOLD, 05- ANTIQUE SILVER, 100- OIL RUBBED BRONZE, 14- POLISHED NICKEL, 15- SATIN NICKEL, 26- POLISHED CHROME					GINGER
MATERIAL: STAINLESS MOUNTING HARDWARE, VARIOUS BRASSES					
PART NO.	4503	24" TOWEL BAR ASS'Y			DWG. NO.
DATE: 6.28.07	REV. DATE	REV. A	SCALE 1:4	COLUMNAR	4503