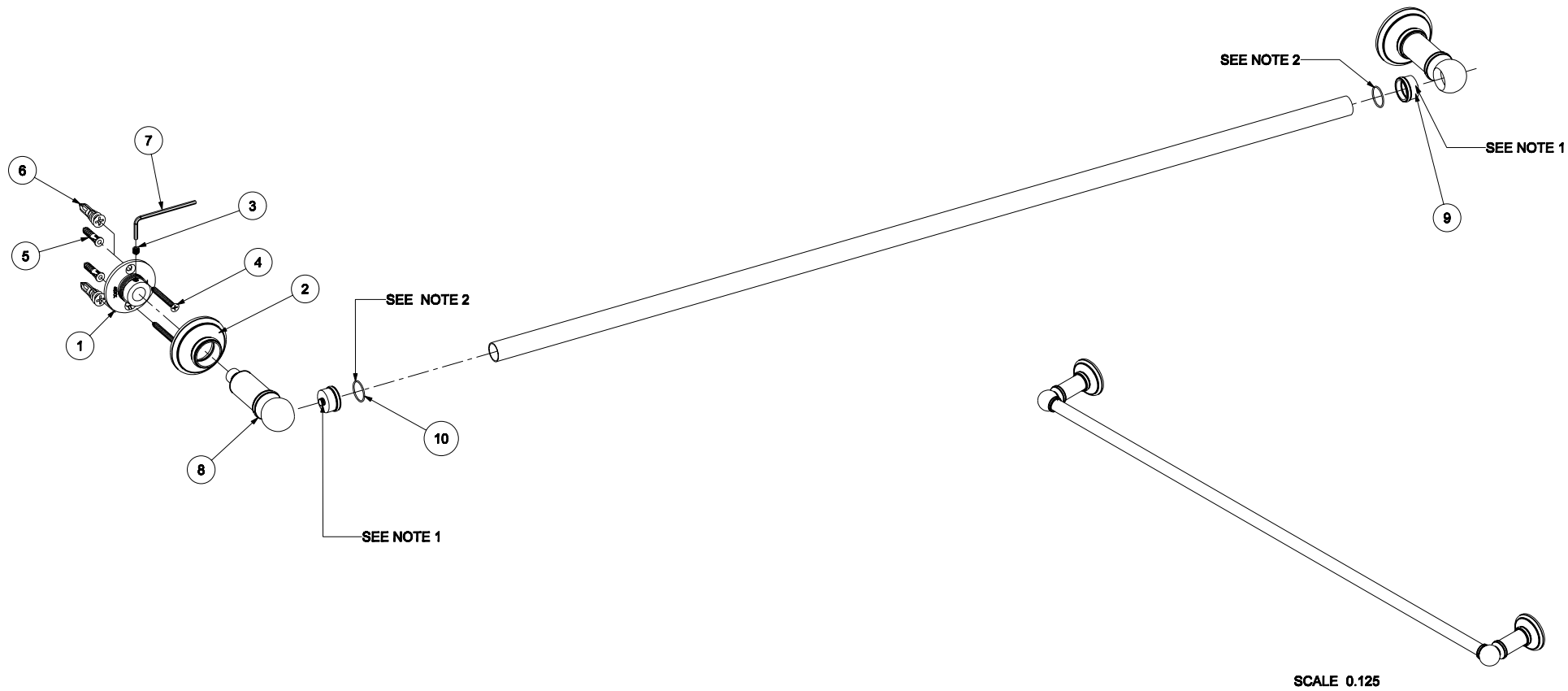


BILL OF MATERIAL

ITEM	PT/ASSY	DESCRIPTION	TYPE	QTY.	DWG.NO.
1	45XX	MOUNTING FLANGE	PART	2	45A-002
2	4500	ROSETTE	PART	2	45A-003
3	SM5-5S	M5 x5 STAINLESS STEEL SET SCREW	PART	2	-
4	8_1_5PFZ	NO.8 x 1-1/2" PHILLIPS FLAT HEAD	PART	4	-
5	GCA	NO. 8 -10 WALL ANCHOR PLASTIC	PART	4	-
6	SSPM	DRYWALL ANCHOR	PART	4	-
7	M2_5HK	2.5MM ALLOY STEEL HEX KEY	PART	1	-
8	4550P	TOWEL BAR/ TISSUE HOLDER POST	PART	2	45A-004
9	4550F	POST FLANGE	PART	2	45A-005
10	RM16-1	16mm x 1mm BUNA-N- O-RING	PART	2	-
11	4554	TOWEL BAR TUBE	PART	1	4554



ASSEMBLY NOTES:

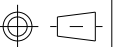
1. APPLY PERMANENT THREAD LOCKER (LOCTITE 262).
2. DURING FINAL ASSEMBLY: APPLY THIN LAYER OF (LOCTITE 404) AFTER O-RINGS ARE INSTALLED AND JUST BEFORE THE TOWEL BAR.

FINISHES:AGD- ANTIQUE GOLD, AS- ANTIQUE SILVER S- POLISHED BRASS, 10B- OIL RUBBED BRONZE, 14- POLISHED NICKEL, 15- SATIN NICKEL, 15A- ANTIQUE NICKEL, 26 POLISHED CHROME

MATERIAL: STAINLESS MOUNTING HARDWARE, VARIOUS BRASSES

PART NO. 4504 32" TOWEL BAR ASS'Y

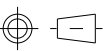
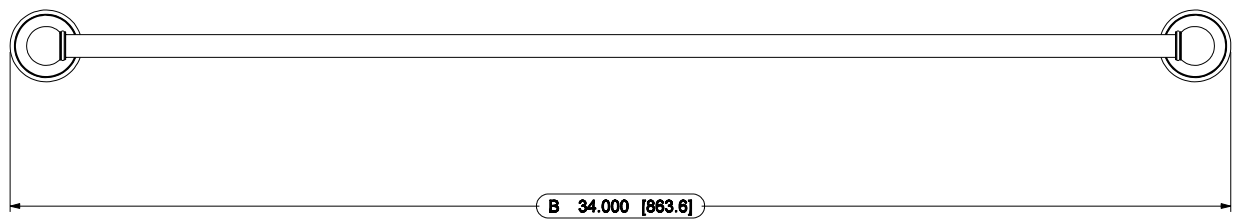
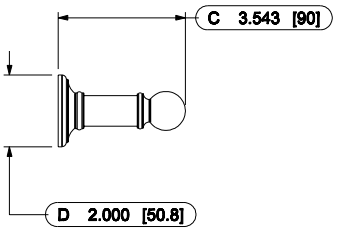
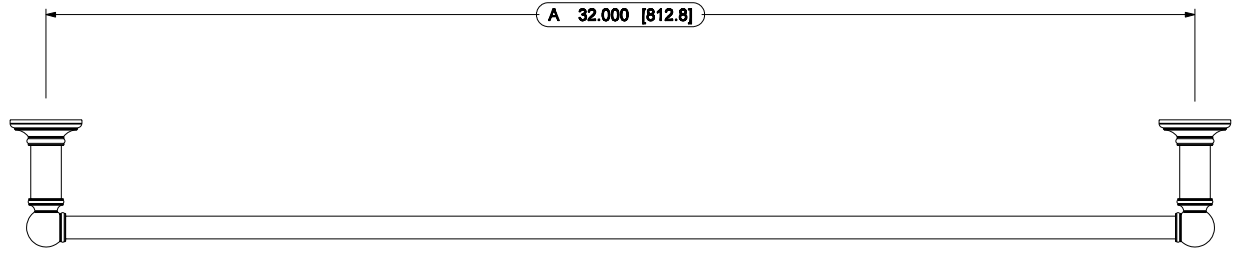
DATE: 6.28.07 REV. DATE REV. A SCALE 1:4 COLUMNAR



GINGER

DWG. NO.

4504



FINISHES:AGD- ANTIQUE GOLD, AS- ANTIQUE SILVER, 10B- OIL RUBBED BRONZE,14- POLISHED NICKEL, 15- SATIN NICKEL, 26 POLISHED CHROME				
MATERIAL: STAINLESS MOUNTING HARDWARE, VARIOUS BRASSES				
PART NO.	4504	32" TOWEL BAR ASS'Y		
DATE:6.28.07	REV.DATE	REV.A	SCALE 3:16	COLUMNAR

GINGER
DWG.NO.
4504