

NOTES:

1. TO INSPECT ASSEMBLY, FOLLOW FIRST ARTICLE AND IN PROCESS INSPECTION SHEET.



2 APPLY PLAMER MIRROR MASTIC



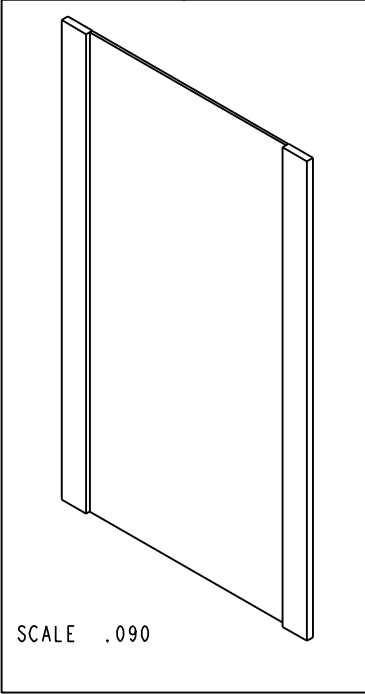
3 APPLY LOCTITE 680.



4 LOCATION FOR VHB TAPE

BILL OF MATERIAL (CURRENT LEVEL)

ITEM	PT/ASSY	DESCRIPTION	TYPE	QTY.
1	40404	TIEROD	PART	2
2	40405	MIRROR SIDE CHANEL	PART	2
3	40406	MIRROR GLASS	PART	1
4	91462_INST1	VHB TAPE 1" X 1 1/2" LONG	PART	4
5	91575	NYLON SPACER 5/8" OD, 1/4" LENGHT (MMC# 94639A673)	PART	4
6	92139	SCRW, 10-32 X 5/16 PHL PAN HD W/RND WASHER SELF CUTTING TYP F ZnPLATED (MMC# N/A)	PART	4
7	92531	SCRW, 10-32 X 7/8 PHL FLT HD Zn PLATED	PART	4
8	BM9	CLEAR ADHESIVE BACKED BUMPER	PART	2
9	MTM-002	MOUNTING KIT	ASSEMBLY	1
10	MTM-003	MIRROR VERTICAL CHANNEL	PART	2



-	F	EN-4300p	06/16/21	R.S.
-	E	EN-2597	09/06/13	-
-	D	EN-2148	04/30/12	-
-	C	EN-1949	11/03/11	-
-	B	EN-1937	10/19/11	-
-	A	EN-1824	07/11/11	-
-	-	EN-1294	11/09/10	-
ZONE	REV	DESCRIPTION	DATE	APPROVED

COPYRIGHT 2005 BRASSTECH, INC. THESE DRAWINGS AND THE DESIGNS DEPICTED HEREIN ARE THE PROPRIETARY PROPERTY OF BRASSTECH. ANY USE OR REPRODUCTION IS SUBJECT TO THE EXPRESS APPROVAL OF BRASSTECH. UNAUTHORIZED USE IS STRICTLY PROHIBITED. ALL RIGHTS RESERVED.

TESTING	ASSEMBLY	PLATING	POLISHING	MACHINING	TOOLING FIXTURE #
-	-	-	-	-	-
-	-	-	-	-	-
-	-	-	-	-	-
-	-	-	-	-	-
-	-	-	-	-	-
-	-	-	-	-	-
-	-	-	-	-	-
-	-	-	-	-	-
-	-	-	-	-	-
-	-	-	-	-	-
-	-	-	-	-	-

UNITS ARE: INCHES [MM]
TOLERANCES ARE:
FRACTIONS DECIMALS ANGLES
±1/16" .X ±.1 [2.5] ±°
.XX ±.06 [1.5]

(X.XXX) DENOTES CRITICAL DIMS.
ALL THREADS ARE CRITICAL

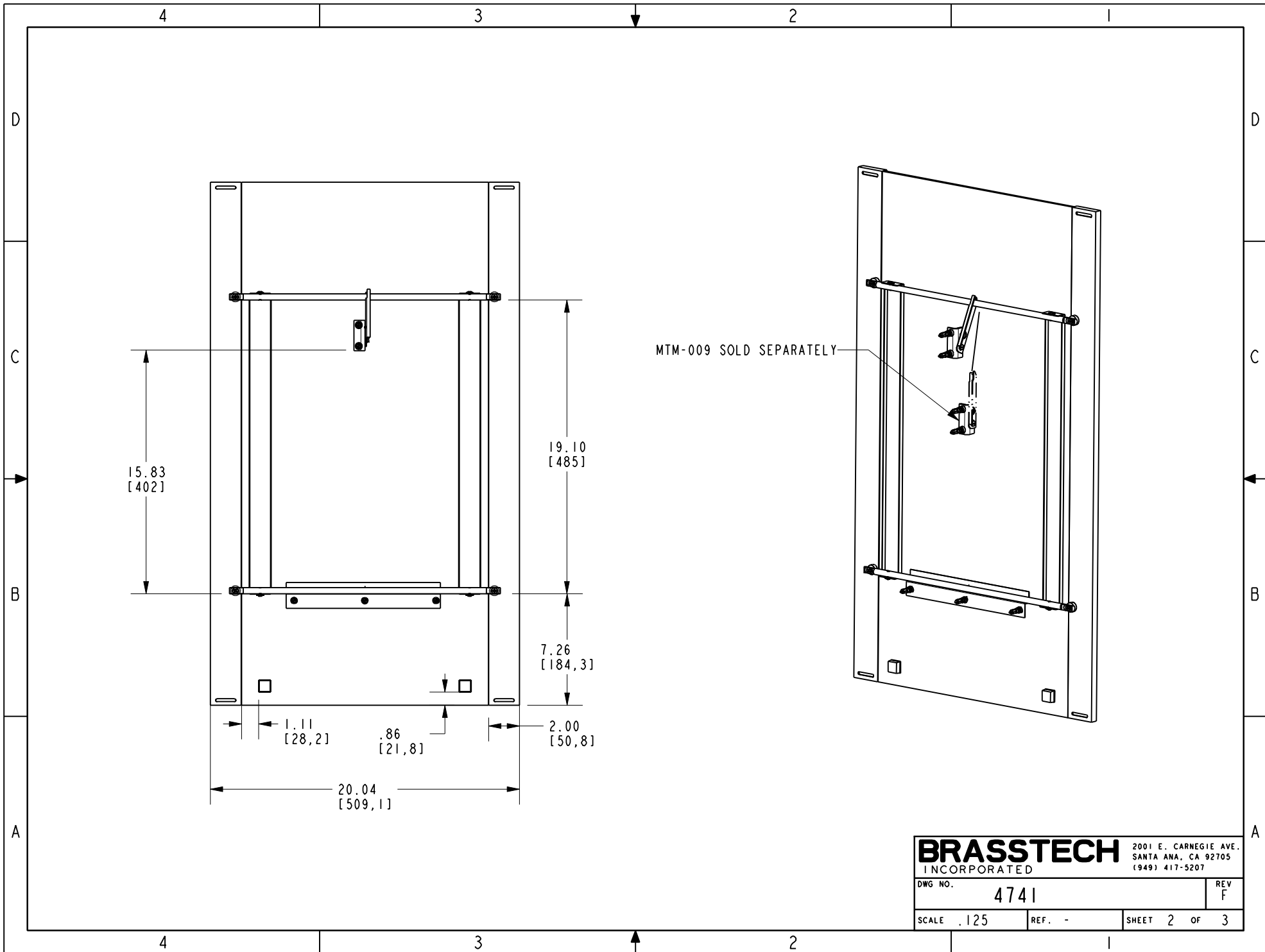
DRAWN	JINSON	06/16/21
CHECKED	R.S.	06/16/21
APPROVED	R.S.	06/16/21

BRASSTECH INCORPORATED
2001 CARNEGIE AVE.
SANTA ANA, CA 92705
(949) 417-5207

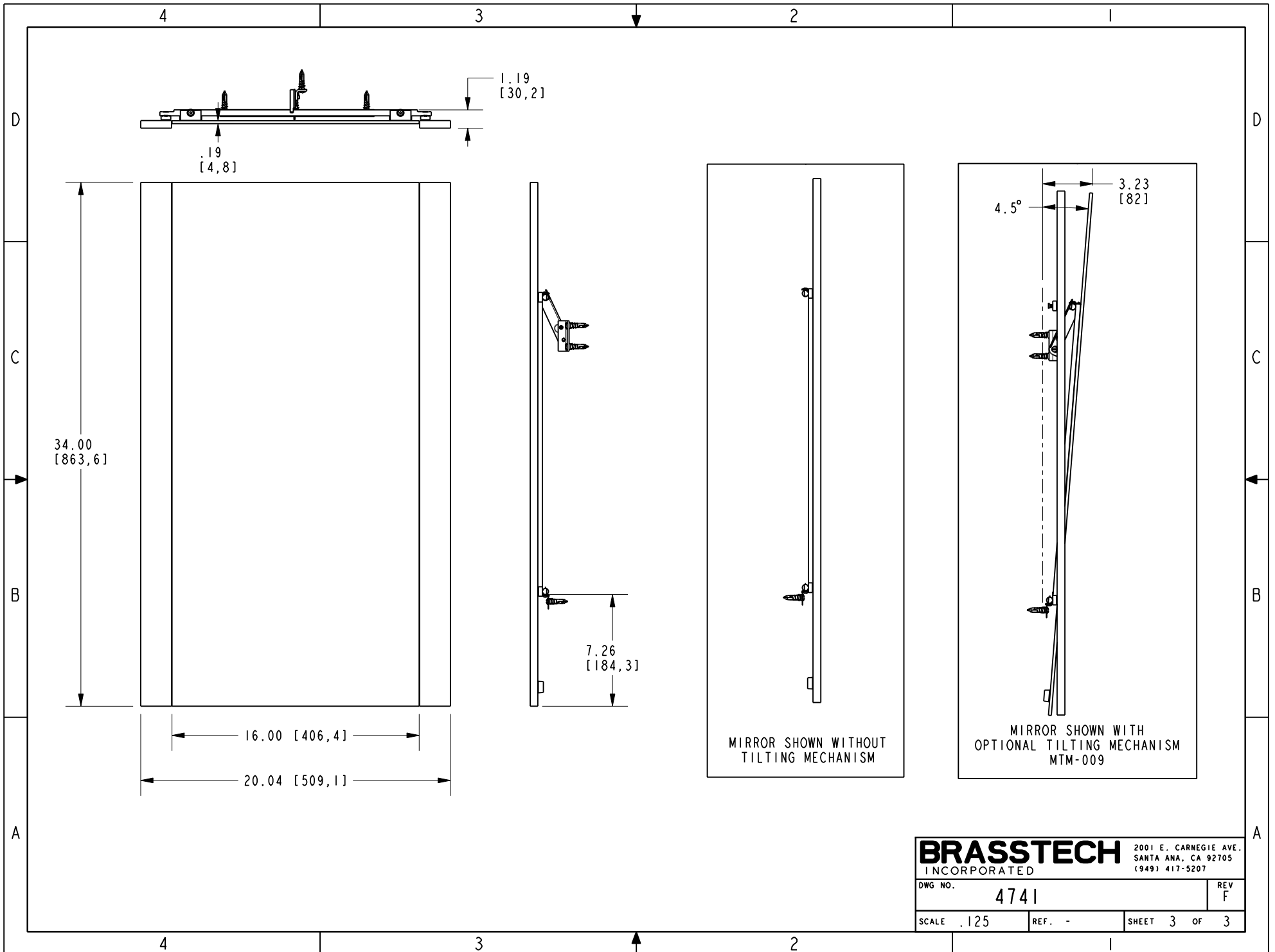
CINU MIRROR

DWG NO. **4741** REV **F**

SCALE .075 REF. - SHEET 1 OF 3



BRASSTECH		2001 E. CARNEGIE AVE. SANTA ANA, CA 92705 (949) 417-5207	
INCORPORATED			
DWG NO.	4741	REV	F
SCALE	.125	REF.	-
		SHEET	2 OF 3



BRASSTECH		2001 E. CARNEGIE AVE. SANTA ANA, CA 92705 (949) 417-5207
DWG NO.	4741	REV F
SCALE .125	REF. -	SHEET 3 OF 3