

NOTES:

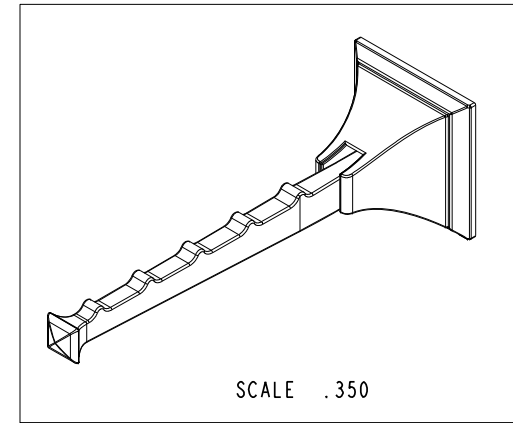
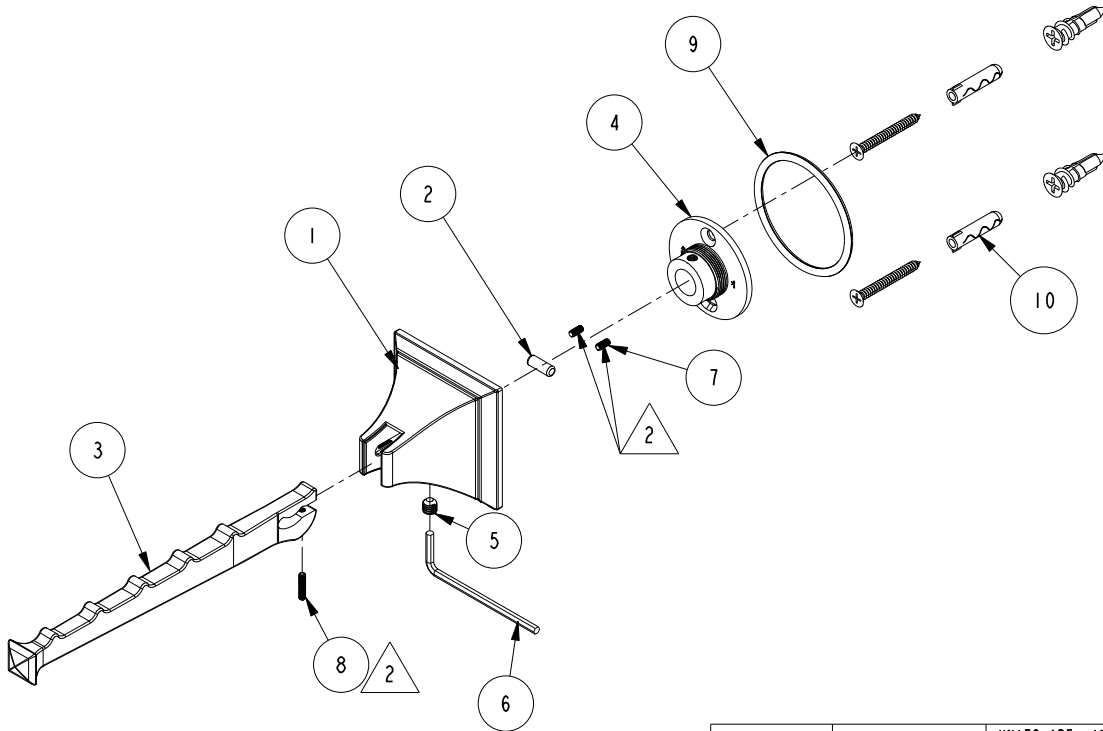
(N1) 1. TO INSPECT ASSEMBLY, FOLLOW FIRST ARTICLE AND IN PROCESS INSPECTION SHEET.

(N2)  2 APPLY LOCTITE 680.

(N3) 3.PLACE ITEM# 6, 9 AND 10 IN SEPARATE BAG

BILL OF MATERIAL (CURRENT LEVEL)

| ITEM | PT/ASSY | DESCRIPTION                          | TYPE     | QTY. |
|------|---------|--------------------------------------|----------|------|
| 1    | 40564   | VALET HOOK ESCUTCHEON                | PART     | 1    |
| 2    | 92840   | PIN, 3/16 X 1/2 DOWEL SS             | PART     | 1    |
| 3    | 40565   | VALET HOOK                           | PART     | 1    |
| 4    | 45XX    | MOUNTING FLANGE                      | PART     | 1    |
| 5    | 92031   | SCRW, M6 X 1 X 6 SKT HD CUP PT SS    | PART     | 1    |
| 6    | 10615   | HEX KEY, 3MM ALLOY STEEL             | PART     | 1    |
| 7    | 92195   | SCRW, 4-40 X 1/4 SKT HD CUP POINT SS | PART     | 2    |
| 8    | 92446   | SCRW, 4-40 X 1/2 SKT HD CUP POINT SS | PART     | 1    |
| 9    | 91647   | O-RING, #2-226, EPDM, 65-75 DURO     | PART     | 1    |
| 10   | 1-206   | HARDWARE PACK                        | ASSEMBLY | 1    |



| -    | D   | EN-4300T    | 06/29/22 | R. S.    |
|------|-----|-------------|----------|----------|
| -    | C   | EN-4032     | 12/10/19 | R. S.    |
| -    | B   | EN-2880     | 04/27/15 | J. M.    |
| -    | A   | EN-2647     | 11/19/13 | -        |
| -    | -   | EN-2087     | 09/20/13 | -        |
| ZONE | REV | DESCRIPTION | DATE     | APPROVED |

COPYRIGHT 2005 BRASSTECH, INC. THESE DRAWINGS AND THE DESIGNS DEPICTED HEREIN ARE THE PROPRIETARY PROPERTY OF BRASSTECH. ANY USE OR REPRODUCTION IS SUBJECT TO THE EXPRESS APPROVAL OF BRASSTECH. UNAUTHORIZED USE IS STRICTLY PROHIBITED. ALL RIGHTS RESERVED.

|                   |                                  |             |         |
|-------------------|----------------------------------|-------------|---------|
| TESTING           | -                                | -           | -       |
| ASSEMBLY          | -                                | -           | -       |
| PLATING           | -                                | -           | -       |
| POLISHING         | -                                | NEXT ASSY   | USED ON |
| MACHINING         | -                                | APPLICATION |         |
| TOOLING FIXTURE # | REMOVE ALL BURRS AND SHARP EDGES |             |         |

UNITS ARE: INCHES [MM]  
TOLERANCES ARE:  
FRACTIONS DECIMALS ANGLES  
±1/16" .X ±.1 [2.5] ±°  
.XX ±.06 [1.5]

(X.XXX) DENOTES CRITICAL DIMS.  
ALL THREADS ARE CRITICAL

|          |   |   |
|----------|---|---|
| DRAWN    | - | - |
| CHECKED  | - | - |
| APPROVED | - | - |

**BRASSTECH**  
INCORPORATED

2001 CARNEGIE AVE.  
SANTA ANA, CA 92705  
(949) 417-5207

VALET HOOK

DWG NO.

4917

REV  
D

SCALE .313

REF. -

SHEET 1 OF 2

4

3

2

D

D

C

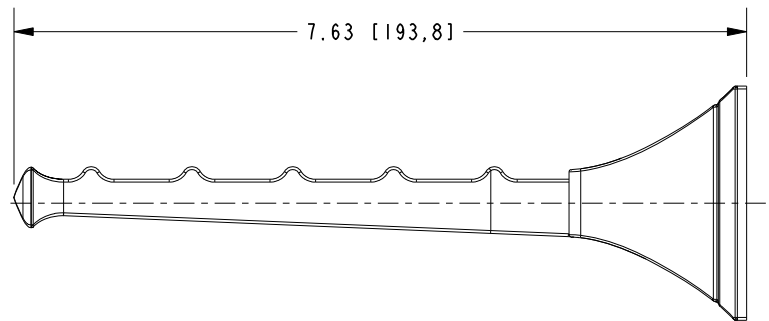
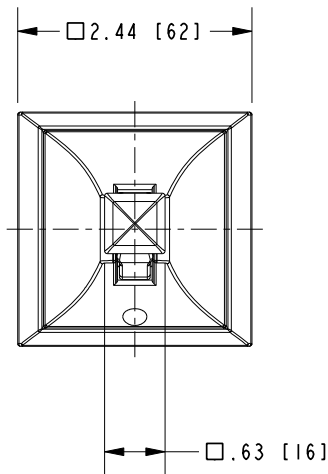
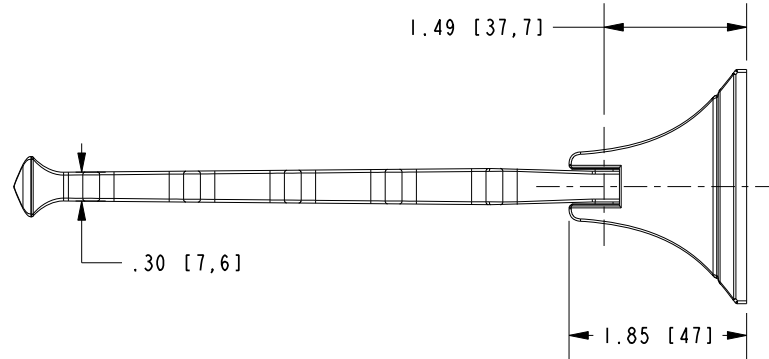
C

B

B

A

A



|                  |      |  |        |
|------------------|------|--|--------|
| <b>BRASSTECH</b> |      | 2001 E. CARNEGIE AVE.<br>SANTA ANA, CA 92705<br>(949) 417-5207 |        |
| DWG NO.          | 4917 | REV  | D      |
| SCALE            | .500 | REF.   | -      |
|                  |      | SHEET  | 2 OF 2 |

4

3

2