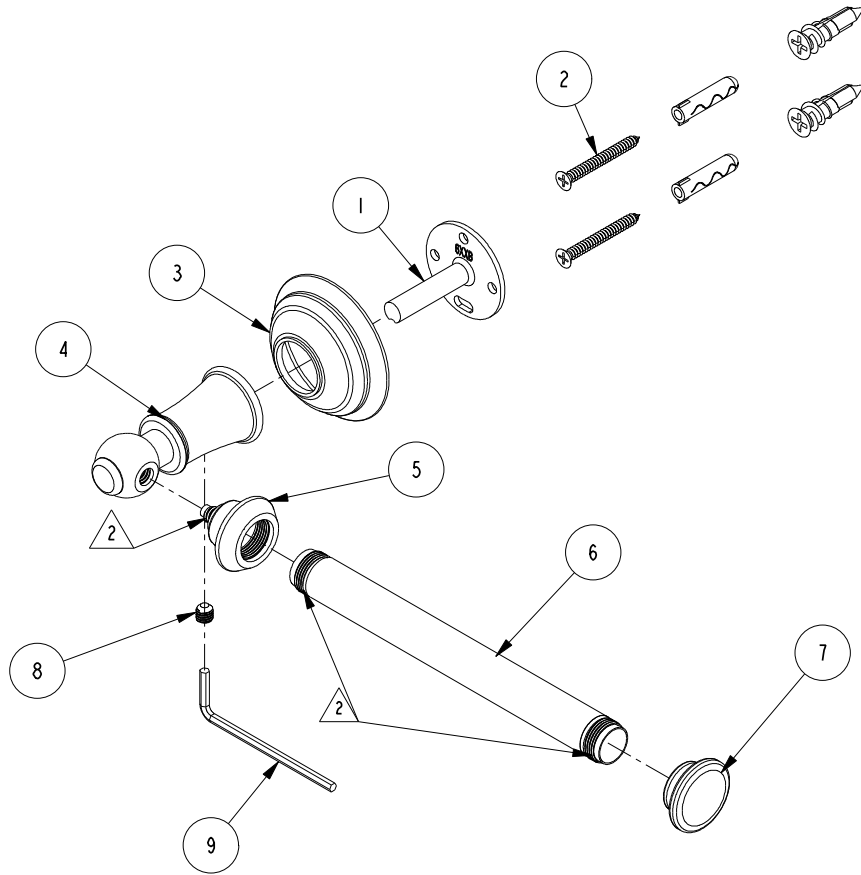
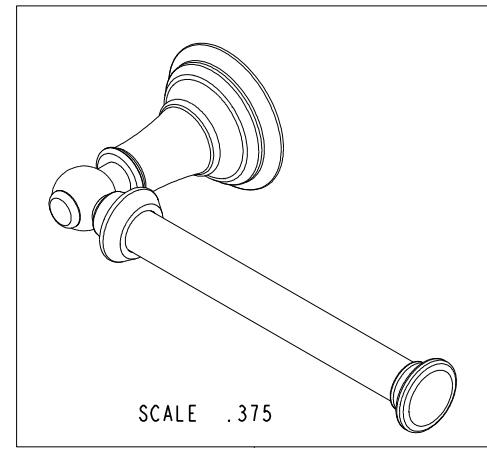


NOTES:

- (N1) 1. FIT / FORM / FUNCTION SHALL FOLLOW PS-E.008.
- △ 2. APPLY LOCTITE 680.
- (N3) 3. PLACE ITEMS# 2 AND 9 IN A SEPARATE BAG



| BILL OF MATERIAL (CURRENT LEVEL) | | | | |
|----------------------------------|---------|---|----------|------|
| ITEM | PT/ASSY | DESCRIPTION | TYPE | QTY. |
| 1 | 6XXB | MOUNTING BRACKET | PART | 1 |
| 2 | 1-206 | HARDWARE PACK | ASSEMBLY | 1 |
| 3 | 2-652 | HANDLE ESCUTCHEON ASM | ASSEMBLY | 1 |
| 4 | 40704 | TOWEL BAR POST LEFT | PART | 1 |
| 5 | 40740 | FINIAL, SINGLE TISSUE HOLDER | PART | 1 |
| 6 | 40741 | TUBE, TISSUE HOLDER | PART | 1 |
| 7 | 40742 | FINIAL | PART | 1 |
| 8 | 92031 | SCRW, M6 X 1 X 6 SKT HD CUP PT W/ SELF LOC SS | PART | 1 |
| 9 | 10615 | HEX KEY, 3MM ALLOY STEEL | PART | 1 |



| - | - | EN-3841 | 5/17/19 | J.M. |
|------|-----|-------------|---------|----------|
| ZONE | REV | DESCRIPTION | DATE | APPROVED |

COPYRIGHT 2005 BRASSTECH, INC. THESE DRAWINGS AND THE DESIGNS DEPICTED HEREIN ARE THE PROPRIETARY PROPERTY OF BRASSTECH. ANY USE OR REPRODUCTION IS SUBJECT TO THE EXPRESS APPROVAL OF BRASSTECH. UNAUTHORIZED USE IS STRICTLY PROHIBITED. ALL RIGHTS RESERVED.

| | | | |
|-------------------|----------------------------------|-------------|---------|
| TESTING | - | - | - |
| ASSEMBLY | - | - | - |
| PLATING | - | - | - |
| POLISHING | - | NEXT ASSY | USED ON |
| MACHINING | - | APPLICATION | |
| TOOLING FIXTURE # | REMOVE ALL BURRS AND SHARP EDGES | | |

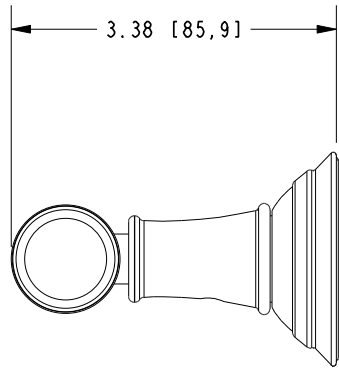
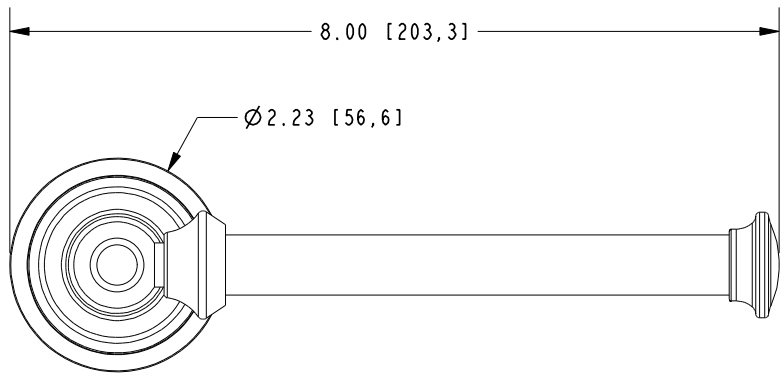
| | | |
|---|----------------|----------|
| UNITS ARE: INCHES [MM] | | |
| TOLERANCES ARE: | | |
| FRACTIONS | DECIMALS | ANGLES |
| ±1/16" | .X ±.1 [2.5] | ±1° |
| | .XX ±.06 [1.5] | |
| (X.XXX) DENOTES CRITICAL DIMS. ALL THREADS ARE CRITICAL | | |
| DRAWN | R.S. | 06/21/19 |
| CHECKED | J.M. | 06/21/19 |
| APPROVED | J.M. | 06/21/19 |

BRASSTECH 2001 CARNEGIE AVE. SANTA ANA, CA 92705 (949) 417-5207
INCORPORATED

TOILET TISSUE HOLDER

DWG NO. **5406** REV -

SCALE .375 REF. - SHEET 1 OF 2



| | | | |
|------------------|------|--|--------|
| BRASSTECH | | 2001 E. CARNEGIE AVE. SANTA ANA, CA 92705 (949) 417-5207 | |
| DWG NO. | 5406 | REV | - |
| SCALE | .500 | REF. | - |
| | | SHEET | 2 OF 2 |