

Features

- Solid brass construction
- Single-post design with non-separating spring-loaded roller
- Complements London Terrace product series

Toilet Tissue Holder 2609

Codes / Standards Compliance

Meets or exceeds the following at date of manufacture:

- All applicable US Federal and State material regulations



Colors / Finishes

- PC: Polished Chrome
- PN: Polished Nickel
- SN: Satin Nickel

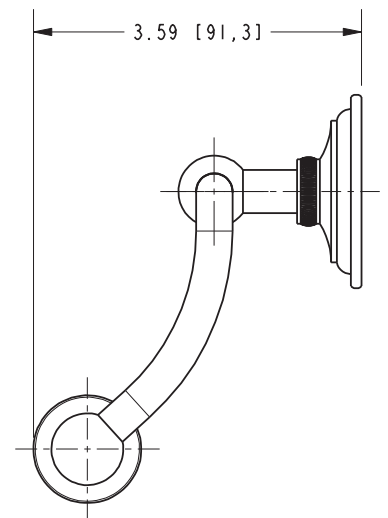
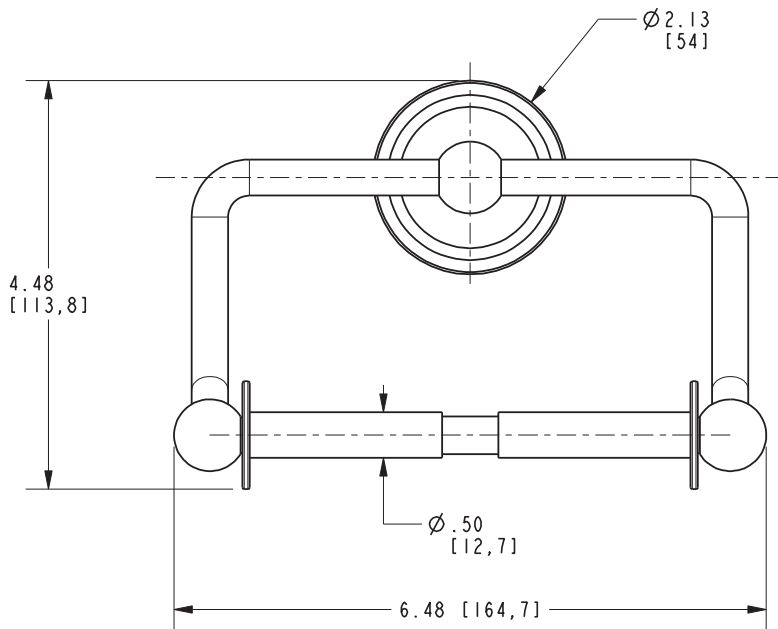
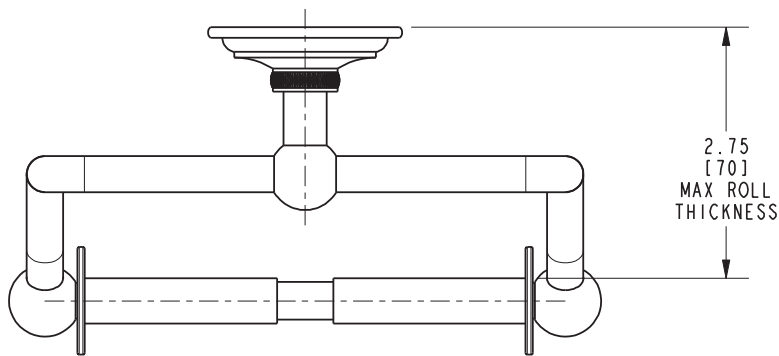
Specified Model

Model	Description	Colors Finishes
2609	Toilet Tissue Holder	<input type="checkbox"/> PC <input type="checkbox"/> PN <input type="checkbox"/> SN

Product Specification: Add "Color / Finish" Suffix to Model Number Below

The Toilet Tissue Holder shall be made of solid brass construction and incorporate a single-post, spring-loaded roller design. Toilet Tissue Holder shall complement Ginger London Terrace product series. Toilet Tissue Holder shall be Model 2609/_____.

2609



London Terrace Toilet Tissue Holder 2609