

## Features

- Solid brass construction
- Complements Surface product series

## Towel Bar 2802

## Codes / Standards Compliance

Meets or exceeds the following at date of manufacture:

- All applicable US Federal and State material regulations



## Colors / Finishes

- PC: Polished Chrome
- SN: Satin Nickel

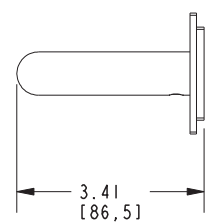
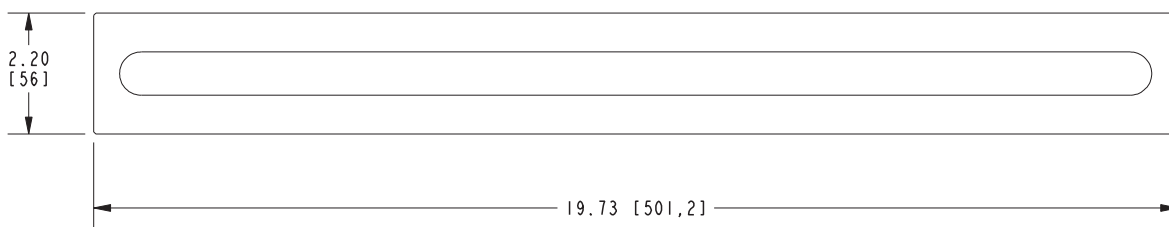
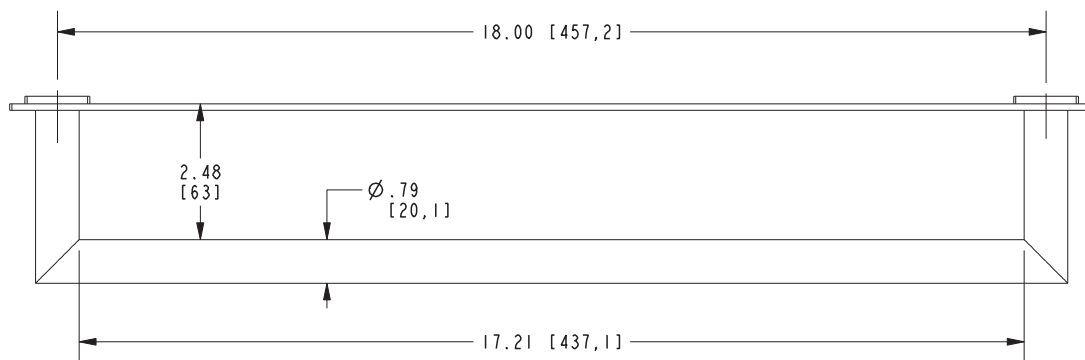
## Specified Model

Model	Description	Colors   Finishes
2802	18" Towel Bar	<input type="checkbox"/> PC <input type="checkbox"/> SN

## Product Specification: Add "Color / Finish" Suffix to Model Number Below

The Towel Bar shall be made of solid brass construction. Towel Bar shall complement Ginger Surface product series. Towel Bar shall be Ginger Model 2802/\_\_\_\_\_ .

# 2802



## Surface Towel Bar 2802