

## Robe Hook 2810Q

### Features

- Solid brass construction
- Complements Surface product series

### Codes / Standards Compliance

Meets or exceeds the following at date of manufacture:

- All applicable US Federal and State material regulations



### Colors / Finishes

- PC: Polished Chrome
- SN: Satin Nickel

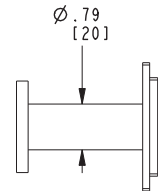
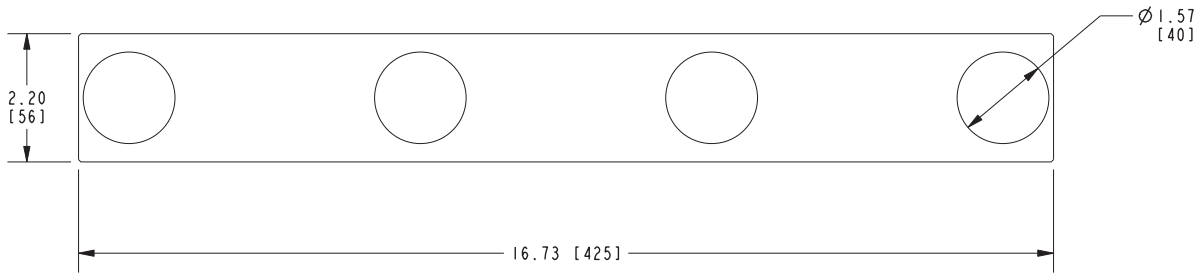
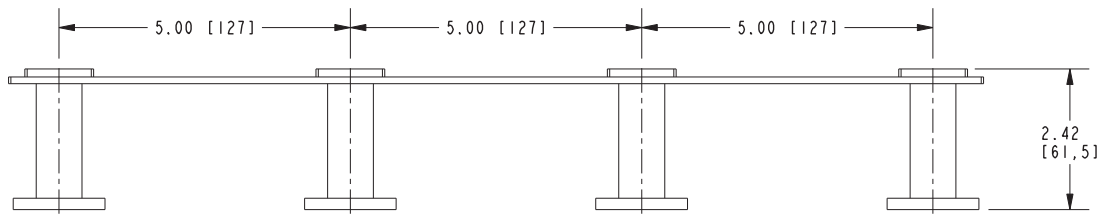
### Specified Model

Model	Description	Colors   Finishes
2810Q	Quadruple Robe Hook	<input type="checkbox"/> PC <input type="checkbox"/> SN

### Product Specification: Add "Color / Finish" Suffix to Model Number Below

The Quadruple Robe Hook shall be made of solid brass construction. Quadruple Robe Hook shall complement Ginger Surface product series. Quadruple Robe Hook shall be Ginger Model 2810Q/\_\_\_\_ .

# 2810Q



## Surface Robe Hook 2810Q