

## Features

- Solid brass construction
- Single-post, single light, pivoting design
- UL listed for damp locations (U.S. and Canada)
- Includes 18 watt compact fluorescent lamp with 2-pin (GU24) base
- Pivoting design allows shade to rotate around vertical post axis
- May be installed with shade facing upward or downward
- Complements Columnar product series

## Codes / Standards Compliance

Meets or exceeds the following at date of manufacture:

- UL Listed
- All applicable US Federal and State material regulations

## Colors / Finishes

- PC: Polished Chrome
- PN: Polished Nickel
- SN: Satin Nickel



## Specified Model

Model	Description	Colors   Finishes
4581	Single Pivoting Light, Satin-Etched Glass	<input type="checkbox"/> PC <input type="checkbox"/> PN <input type="checkbox"/> SN

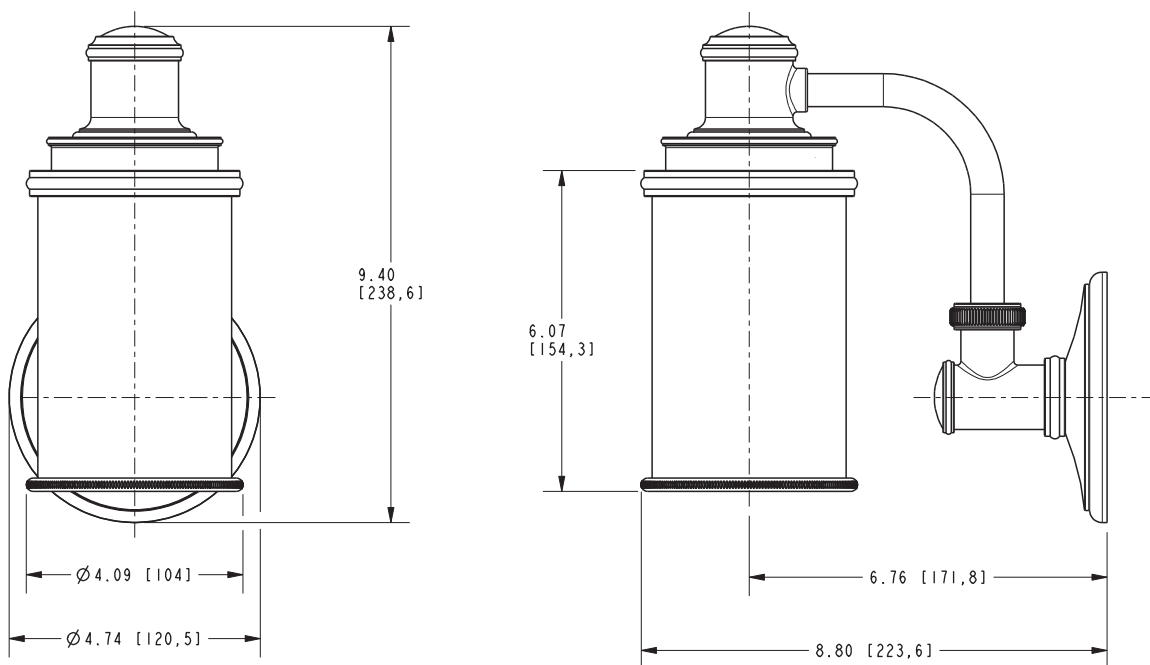
## Replacement Parts

Model	Description	Colors   Finishes
4581-G-E	Replacement Glass Shade, Satin-Etched Glass	<input type="checkbox"/> Satin-Etched Glass

## Product Specification: Add "Color / Finish" Suffix to Model Number Below

The Single Pivoting Light shall incorporate solid brass construction and a satin-etched glass shade capable of pivoting about a vertical post axis. Single Pivoting Light shall include a 18 watt compact fluorescent lamp with 2-pin (GU24) base. Single Pivoting Light shall complement Ginger Columnar product series. Single Pivoting Light shall be Ginger Model 4581/\_\_\_\_\_.

# 4581



## Columnar Single Light 4581

Page 2 of 2  
EN-4300o

Spec\_4581\_c\_9.21

# GINGER

t: 949.417.5207 | [www.gingerco.com](http://www.gingerco.com)  
©2021 Brasstech, Inc.