

Toilet Tissue Holder 5406

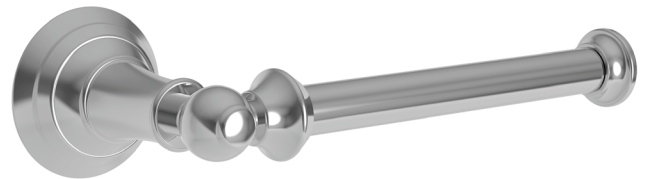
Features

- Solid brass construction
- Single-post, open roller design
- Complements Garnsey product series
- Optional left or right hand mounting orientation

Codes / Standards Compliance

Meets or exceeds the following at date of manufacture:

- All applicable US Federal and State material regulations



Colors / Finishes

- PC: Polished Chrome
- PN: Polished Nickel
- SN: Satin Nickel

Specified Model

Model	Description	Colors Finishes
5406	Open Toilet Tissue Holder	<input type="checkbox"/> PC <input type="checkbox"/> PN <input type="checkbox"/> SN

Product Specification: Add "Color / Finish" Suffix to Model Number Below

The Toilet Tissue Holder shall be made of solid brass construction and incorporate a single-post, open roller design. Toilet Tissue Holder shall complement Ginger Garnsey product series. Toilet Tissue Holder may be installed in either left or right hand orientation. Toilet Tissue Holder shall be Ginger Model 5406/____.

5406

