

HOTEL SHELF FRAME

Features

- Solid brass frame
- Shelf extends 11" from the wall
- Intended for use with Ginger hotel shelf mounting kit as specified (Required Accessory)
- Integral towel bar

Hotel Shelf
XX43S-20
 Also **XX43S-24**

Codes / Standards Compliance

Meets or exceeds the following at date of manufacture:

- All applicable US Federal and State material regulations

Colors / Finishes

- PC: Polished Chrome
- PN: Polished Nickel
- SN: Satin Nickel



Specified Model

Model	Description	Colors / Finishes
XX43S-20	20" Squared Corner Hotel Shelf Frame with Towel Bar	<input type="checkbox"/> PC <input type="checkbox"/> PN <input type="checkbox"/> SN
XX43S-24	24" Squared Corner Hotel Shelf Frame with Towel Bar	<input type="checkbox"/> PC <input type="checkbox"/> PN <input type="checkbox"/> SN

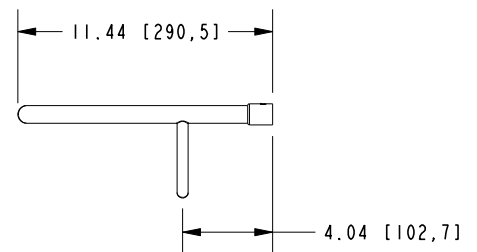
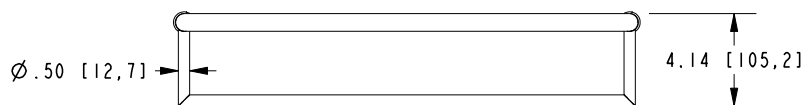
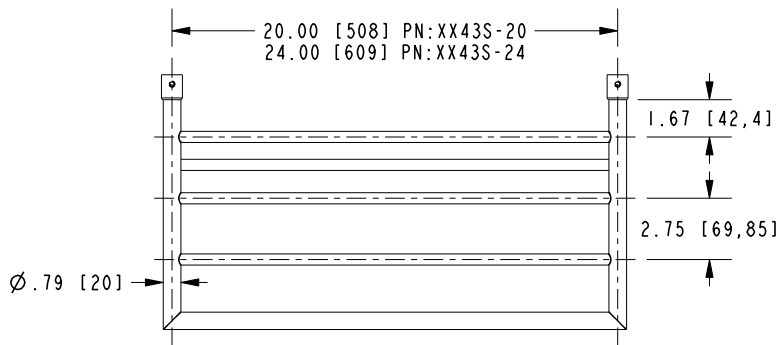
Required Accessory: Hotel Shelf Mounting Kit

Model	<input type="checkbox"/> 114B	<input type="checkbox"/> 464B	<input type="checkbox"/> 524B	<input type="checkbox"/> 544B	<input type="checkbox"/> 564B
Finish	<input type="checkbox"/> PC <input type="checkbox"/> PN <input type="checkbox"/> SN	<input type="checkbox"/> PC <input type="checkbox"/> PN <input type="checkbox"/> SN	<input type="checkbox"/> PC <input type="checkbox"/> PN <input type="checkbox"/> SN	<input type="checkbox"/> PC <input type="checkbox"/> PN <input type="checkbox"/> SN	<input type="checkbox"/> PC <input type="checkbox"/> PN <input type="checkbox"/> SN
Image					

Product Specification: Add "Color / Finish" Suffix to Model Number Below

The Hotel Shelf shall incorporate a solid brass Hotel Shelf Frame with integral towel bar and a coordinating Mounting Kit (specified separately). Hotel Shelf shall incorporate a projected depth of approximately 11". Hotel Shelf Frame shall be Ginger Model XX43S-2___/_____. Required accessory Mounting Kit shall be Ginger Model _____B/_____.

XX43S-20



Hotel Shelf Frame XX43S-20